

LEA Name : Eastern Lancaster County SD
Address : 669 E Main St
New Holland , PA 17557

County : Lancaster
AUN Number : 113362303
LEA Type : SD

Annual Financial Report Accuracy Certification Statement

For Fiscal Year Ending

6/30/2019

Pennsylvania Department of Education

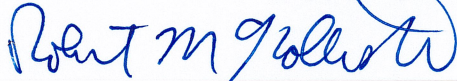
&

Office of Comptroller Operations

PDE-2056: Intermediate Unit

PDE-2057: School District, AVTS/CTC, Charter School,
and Special Program Jointure

CERTIFICATION: By signing this page I agree that the electronic data submitted is a complete and accurate statement of the financial operations and status of the local education agency for the fiscal year. It has been prepared in accordance with generally accepted accounting principles and established Commonwealth of PA reporting guidelines.



Chief School Administrator Signature

11/8/19

Date



Board Secretary Signature

11/8/19

Date

Keith D Ramsey

Contact Person

keith_ramsey@elanco.org

Contact Person E-mail Address

(717)354-1507

Ext :

Contact Person Telephone Number

(717)351-1408

Contact Person Fax Number

Audit Certification
Annual Financial Report:
For Fiscal Year Ending **6/30/2019**
(Pursuant to PA School Code Section 218(b))

LEA Name : Eastern Lancaster County SD
AUN Number : 113362303
County : Lancaster

Audit Certification Due: 12/31/2019

This certification is applicable to the Annual Financial Report data submitted
through the Consolidated Financial Reporting System on: 11/8/2019

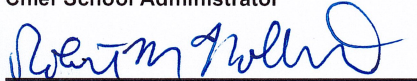
Date

Auditing Firm:

BBD, LLP

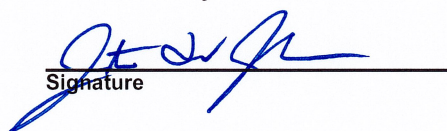
CERTIFICATION: By signing this page I agree that the financial statements of the school have been properly audited as noted above pursuant to Article XXIV, and in the auditor's professional opinion, the Annual Financial Report (PDE-2057) submitted on the date referenced is materially consistent with the audited financial statements.

Chief School Administrator


Signature

11/8/19
Date

Board Secretary


Signature

11/8/19
Date

Keith D Ramsey

Contact Person

keith_ramsey@elanco.org

Contact Person E-mail Address

(717)354-1507

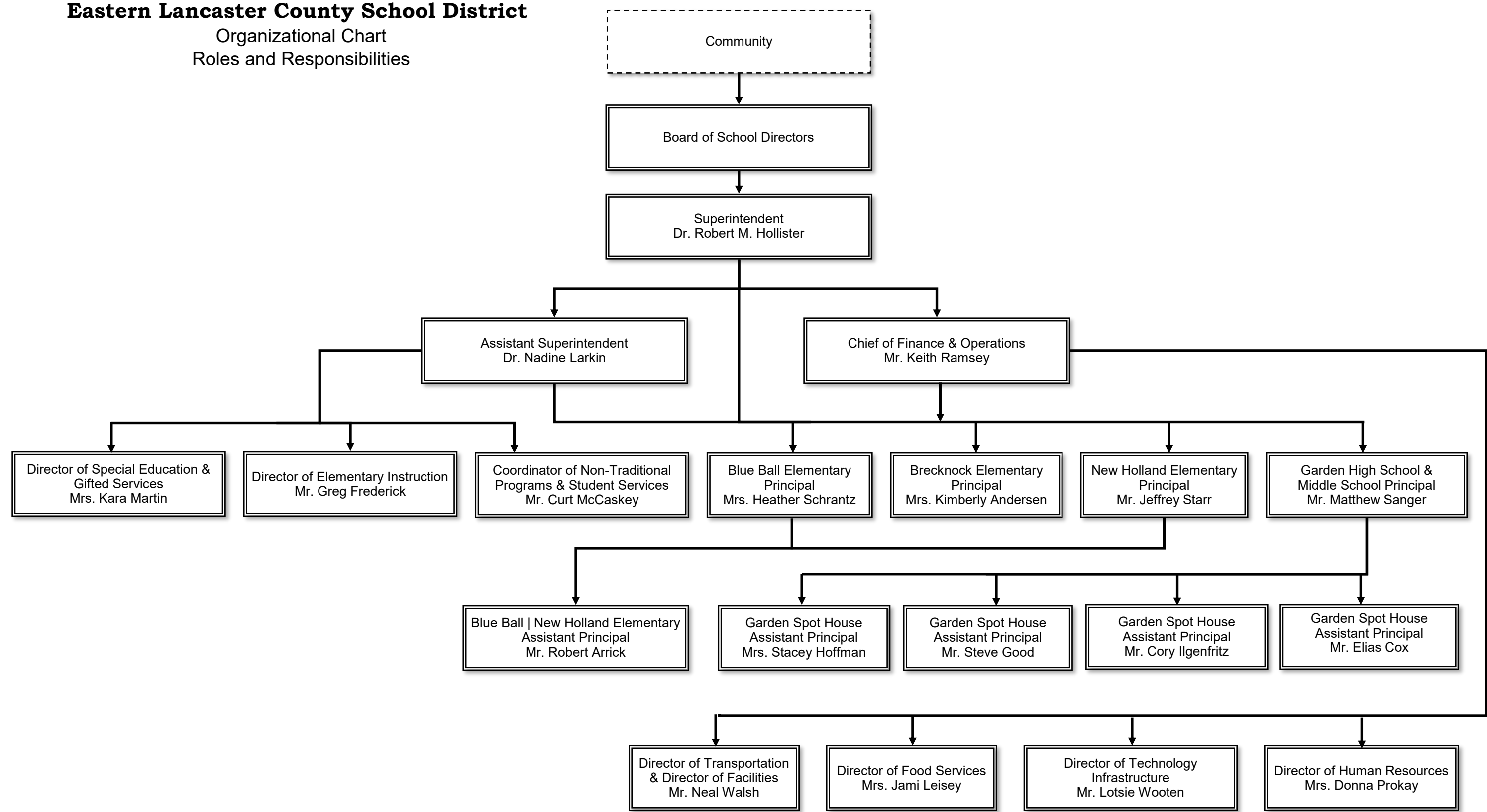
Ext :

Contact Person Telephone Number

(717)351-1408

Contact Person Fax Number

Eastern Lancaster County School District
Organizational Chart
Roles and Responsibilities



<u>Val Number</u>	<u>Description</u>	<u>Justification</u>
41162	<p>Expenditure Detail, Salaries (Object 100) and Benefits (Object 200 series): Amounts must be entered for both Salaries and Benefits.</p> <p>Please verify following fund and function codes: Fund 10 Function 2390;</p>	<p>The amount reported represents the employer share of purchase of service payments for PSERS</p>
50450	<p>SESS - 2350 Legal and Accounting Services: SESS Schedule amounts for Special Education vary from prior year by 40% or more. Correct the data or enter a justification.</p> <p>SESS Schedule 2350: \$14,740.47 Prior Year SESS Schedule 2350: \$5,078.83</p>	<p>There was additional legal services required during the current year.</p>
50470	<p>SESS - 2440 Nursing Services: SESS Schedule amounts for Special Education vary from prior year by 40% or more. Correct the data or enter a justification.</p> <p>SESS Schedule 2440: \$164,804.11 Prior Year SESS Schedule 2440: \$100,808.82</p>	<p>There was an increase in the number of special education students which increase the cost for nursing services.</p>

Amounts Expressed in Whole Dollars		<u>General Fund</u> <u>(10)</u>	<u>Public Purpose Trust</u> <u>(27)</u>	<u>Other Compt Approved</u> <u>(28)</u>	<u>Athletic / Activity</u> <u>(29)</u>	<u>Capital Reserve (690.</u> <u>1850)</u> <u>(31)</u>
Assets And Deferred Outflows Of Resources						
Assets						
0100	Cash and Cash Equivalents	10,329,916				
0110	Investments	988,313				
0120	Taxes Receivable	1,275,986				
0130	Due From Other Funds					
0141	Due From Other Governments	1,504,269				
0142	State Revenue Receivable	2,654,826				
0143	Federal Revenue Receivable	516,666				
0145	Other Intergovernmental Revenue Receivable					
0146	Due from Primary Government					
0147	Due from Component Unit					
0150	Other Receivables	163,575				
0170	Inventories					
0180	Prepaid Expenses (Expenditures)					
0190	Other Current Assets					
Total Assets		\$17,433,551				
0910	Deferred Outflows of Resources					
Total Assets And Deferred Outflows Of Resources		\$17,433,551				

Amounts Expressed in Whole Dollars		<u>Capital Reserve (1431</u> <u>(32)</u>	<u>Other Capital Projects</u> <u>Fund</u> <u>(39)</u>	<u>Debt Service</u> <u>(40)</u>	<u>Permanent</u> <u>(90)</u>	<u>Total Governmental</u> <u>Funds</u>
Assets And Deferred Outflows Of Resources						
Assets						
0100	Cash and Cash Equivalents	8,904,088				19,234,004
0110	Investments	1,543,982				2,532,295
0120	Taxes Receivable					1,275,986
0130	Due From Other Funds	2,500,000				2,500,000
0141	Due From Other Governments					1,504,269
0142	State Revenue Receivable					2,654,826
0143	Federal Revenue Receivable					516,666
0145	Other Intergovernmental Revenue Receivable					
0146	Due from Primary Government					
0147	Due from Component Unit					
0150	Other Receivables					163,575
0170	Inventories					
0180	Prepaid Expenses (Expenditures)					
0190	Other Current Assets					
Total Assets		\$12,948,070				\$30,381,621
0910	Deferred Outflows of Resources					
Total Assets And Deferred Outflows Of Resources		\$12,948,070				\$30,381,621

Amounts Expressed in Whole Dollars	<u>General Fund</u> <u>(10)</u>	<u>Public Purpose Trust</u> <u>(27)</u>	<u>Other Compt Approved</u> <u>(28)</u>	<u>Athletic / Activity</u> <u>(29)</u>	<u>Capital Reserve (690.</u> <u>1850)</u> <u>(31)</u>
Liabilities And Deferred Inflows Of Resources And Fund Balances					
Liabilities					
0400 Due to Other Funds	2,511,956				
0411 Due to Other Governments					
0412 Due to Primary Government					
0413 Due to Component Unit					
0420 Accounts Payable	465,682				
0430 Contracts Payable					
0440 Current Portion of Long-Term Debt					
0450 Short-Term Payables					
0461 Accrued Salaries and Benefits	5,190,815				
0462 Payroll Deductions and Withholding	196,371				
0480 Unearned Revenues	44,526				
0490 Other Current Liabilities	3,359				
Total Liabilities	\$8,412,709				
0950 Deferred Inflows of Resources	330,839				
Fund Balances					
0810 Nonspendable Fund Balance					
0820 Restricted Fund Balance					
0830 Committed Fund Balance	5,140,654				
0840 Assigned Fund Balance					
0850 Unassigned Fund Balance	3,549,349				
Total Fund Balances	\$8,690,003				
Total Liabilities, Deferred Inflows Of Resources And Fund Balances	\$17,433,551				

Amounts Expressed in Whole Dollars		<u>Capital Reserve (1431)</u> <u>(32)</u>	<u>Other Capital Projects</u> <u>Fund</u> <u>(39)</u>	<u>Debt Service</u> <u>(40)</u>	<u>Permanent</u> <u>(90)</u>	<u>Total Governmental</u> <u>Funds</u>
Liabilities And Deferred Inflows Of Resources And Fund Balances						
Liabilities						
0400	Due to Other Funds					2,511,956
0411	Due to Other Governments					
0412	Due to Primary Government					
0413	Due to Component Unit					
0420	Accounts Payable					465,682
0430	Contracts Payable					
0440	Current Portion of Long-Term Debt					
0450	Short-Term Payables					
0461	Accrued Salaries and Benefits					5,190,815
0462	Payroll Deductions and Withholding					196,371
0480	Unearned Revenues					44,526
0490	Other Current Liabilities					3,359
Total Liabilities						\$8,412,709
0950	Deferred Inflows of Resources					330,839
Fund Balances						
0810	Nonspendable Fund Balance					
0820	Restricted Fund Balance	12,948,070				12,948,070
0830	Committed Fund Balance					5,140,654
0840	Assigned Fund Balance					
0850	Unassigned Fund Balance					3,549,349
Total Fund Balances		\$12,948,070				\$21,638,073
Total Liabilities, Deferred Inflows Of Resources And Fund Balances		\$12,948,070				\$30,381,621

Amounts Expressed in Whole Dollars		<u>General Fund</u> <u>(10)</u>	<u>Public Purpose Trust</u> <u>(27)</u>	<u>Other Compt Approved</u> <u>(28)</u>	<u>Athletic / Activity</u> <u>(29)</u>	<u>Capital Reserve (690.</u> <u>1850)</u> <u>(31)</u>
Revenues						
6000	Revenue from Local Sources	42,744,051				
7000	Revenue from State Sources	14,155,754				
8000	Revenue from Federal Sources	1,632,304				
Total Revenues		\$58,532,109				
Expenditures						
1000	Instruction	31,701,450				
2000	Support Services	20,130,504				
3000	Operation of Non-Instructional Services	1,084,853				
4000	Facilities Acquisition, Construction and Improvement Services	149,925				
5110	Debt Service	3,602,875				
5130	Refund of Prior Year Revenues / Receipts					
Total Expenditures		\$56,669,607				
Excess (Deficiency) Of Revenues Over Expenditures		\$1,862,502				
Other Financing Sources (Uses)						
9110	Face Value of Bonds Issued					
9120	Proceeds from Refunding of Bonds					
9130	Bond Premiums					
9200	Proceeds from Extended-Term Financing					
9300	Interfund Transfers - IN					
9400	Sale of or Compensation for Loss of Fixed Assets	7,006				
9710	Transfers from Component Units					
9720	Transfers from Primary Governments					
9910	Other Financing Sources Not Listed in the 9000 Series					
9990	Insurance Recoveries					
5120	Debt Service – Refunded Bonds					
5150	Bond Discounts					
5200	Interfund Transfers – Out	2,515,197				
5300	Transfers Out to Component Units/Primary Governments					
Total Other Financing Sources (Uses)		(\$2,508,191)				

LEA : 113362303 Eastern Lancaster County SD

Printed 11/19/2019 11:25:26 AM

Amounts Expressed in Whole Dollars		<u>Capital Reserve (1431</u> <u>(32)</u>	<u>Other Capital Projects</u> <u>Fund</u> <u>(39)</u>	<u>Debt Service</u> <u>(40)</u>	<u>Permanent</u> <u>(90)</u>	<u>Total Governmental</u> <u>Funds</u>
Revenues						
6000	Revenue from Local Sources	187,351				42,931,402
7000	Revenue from State Sources					14,155,754
8000	Revenue from Federal Sources					1,632,304
Total Revenues		\$187,351				\$58,719,460
Expenditures						
1000	Instruction					31,701,450
2000	Support Services					20,130,504
3000	Operation of Non-Instructional Services					1,084,853
4000	Facilities Acquisition, Construction and Improvement Services					149,925
5110	Debt Service					3,602,875
5130	Refund of Prior Year Revenues / Receipts					
Total Expenditures						\$56,669,607
Excess (Deficiency) Of Revenues Over Expenditures		\$187,351				\$2,049,853
Other Financing Sources (Uses)						
9110	Face Value of Bonds Issued					
9120	Proceeds from Refunding of Bonds					
9130	Bond Premiums					
9200	Proceeds from Extended-Term Financing					
9300	Interfund Transfers - IN	2,500,000				2,500,000
9400	Sale of or Compensation for Loss of Fixed Assets					7,006
9710	Transfers from Component Units					
9720	Transfers from Primary Governments					
9910	Other Financing Sources Not Listed in the 9000 Series					
9990	Insurance Recoveries					
5120	Debt Service – Refunded Bonds					
5150	Bond Discounts					
5200	Interfund Transfers – Out					2,515,197
5300	Transfers Out to Component Units/Primary Governments					
Total Other Financing Sources (Uses)		\$2,500,000				(\$8,191)

Amounts Expressed in Whole Dollars		<u>General Fund</u> <u>(10)</u>	<u>Public Purpose Trust</u> <u>(27)</u>	<u>Other Compt Approved</u> <u>(28)</u>	<u>Athletic / Activity</u> <u>(29)</u>	<u>Capital Reserve</u> <u>(690.</u> <u>1850)</u> <u>(31)</u>
Special And Extraordinary Items						
9920	Special Items – Gains					
9930	Extraordinary Items – Gains					
5520	Special Items – Losses					
5530	Extraordinary Items – Losses					
Net Change In Fund Balances		(\$645,689)				
Fund Balance						
0001	Fund Balance - Beginning of Fiscal Year	9,335,692				
Fund Balance - End Of Year		\$8,690,003				

Amounts Expressed in Whole Dollars		<u>Capital Reserve (1431</u> <u>(32)</u>	<u>Other Capital Projects</u> <u>Fund</u> <u>(39)</u>	<u>Debt Service</u> <u>(40)</u>	<u>Permanent</u> <u>(90)</u>	<u>Total Governmental</u> <u>Funds</u>
Special And Extraordinary Items						
9920	Special Items – Gains					
9930	Extraordinary Items – Gains					
5520	Special Items – Losses					
5530	Extraordinary Items – Losses					
Net Change In Fund Balances		\$2,687,351				\$2,041,662
Fund Balance						
0001	Fund Balance - Beginning of Fiscal Year	10,260,719				19,596,411
Fund Balance - End Of Year		\$12,948,070				\$21,638,073

Amounts Expressed in Whole Dollars		<u>Food Service</u> <u>(51)</u>	<u>Child Care</u> <u>Operations</u> <u>(52)</u>	<u>Other Enterprise</u> <u>(58)</u>	<u>TOTAL</u>	<u>Internal Service</u> <u>(60)</u>
Assets And Deferred Outflows Of Resources						
Current Assets						
0100	Cash and Cash Equivalents	1,051,804			1,051,804	8,646,927
0110	Investments					
0130	Due From Other Funds	11,956			11,956	
0141	Due From Other Governments					
0142	State Revenue Receivable					
0143	Federal Revenue Receivable					
0146	Due from Primary Government					
0147	Due from Component Unit					
0150	Other Receivables	709			709	143,800
0170	Inventories	23,907			23,907	
0180	Prepaid Expenses (Expenditures)					
0190	Other Current Assets					
Total Current Assets		\$1,088,376			\$1,088,376	\$8,790,727
Noncurrent Assets						
0211	Land					
0212	Site Improvements (Net)					
0220	Buildings and Building Improvements (Net)					
0230	Machinery, Equipment and Furniture (Net)	107,367			107,367	
0250	Construction in Progress					
0260	Long Term Prepayments					
0290	Other Noncurrent Assets					
Total Noncurrent Assets		\$107,367			\$107,367	
0910	Deferred Outflows of Resources	91,315			91,315	
Total Assets And Deferred Outflows Of Resources		\$1,287,058			\$1,287,058	\$8,790,727

Amounts Expressed in Whole Dollars	Food Service (51)	Child Care Operations (52)	Other Enterprise (58)	TOTAL	Internal Service (60)
Liabilities And Deferred Inflows Of Resources And Net Position					
Current Liabilities					
0400 Due to Other Funds					
0411 Due to Other Governments					
0413 Due to Component Unit					
0420 Accounts Payable	96			96	5,531
0430 Contracts Payable					
0440 Current Portion of Long-Term Debt					
0450 Short-Term Payables					
0461 Accrued Salaries and Benefits	1,569			1,569	186,832
0462 Payroll Deductions and Withholding					
0480 Unearned Revenues	37,608			37,608	
0490 Other Current Liabilities					
Total Current Liabilities	\$39,273			\$39,273	\$192,363
Noncurrent Liabilities					
0510 Bonds Payable					
0520 Extended-Term Financing Agreements Payable					
0530 Lease-Purchase Obligations					
0540 Accumulated Compensated Absences					
0550 Authority Lease Obligations					
0560 Other Post-Employment Benefits (OPEB)					
0570 Net Pension Liability	577,314			577,314	
0599 Other Noncurrent Liabilities					
Total Noncurrent Liabilities	\$577,314			\$577,314	
Total Liabilities	\$616,587			\$616,587	\$192,363
0950 Deferred Inflows of Resources	10,064			10,064	
Net Position					
0791 Net Investment in Capital Assets	107,367			107,367	
0008 Restricted Net Position (0792 – 0798)					
0799 Unrestricted Net Position	553,040			553,040	8,598,364
Total Net Position	\$660,407			\$660,407	\$8,598,364
Total Liabilities And Deferred Inflows Of Resources And Net Position	\$1,287,058			\$1,287,058	\$8,790,727

Amounts Expressed in Whole Dollars	Food Service (51)	Child Care Operations (52)	Other Enterprise (58)	TOTAL	Internal Service (60)
Operating Revenues					
6600 Food Service Revenue	562,285			562,285	
0071 Charges for Services					4,052,799
0072 Other Operating Revenue					
Total Operating Revenues	\$562,285			\$562,285	\$4,052,799
Operating Expenses					
100 Personnel Services – Salaries	164,799			164,799	
200 Personnel Services – Employee Benefits	109,876			109,876	3,702,895
300 Purchased Professional and Technical Services	1,690			1,690	
400 Purchased Property Services	35,767			35,767	
500 Other Purchased Services	412,707			412,707	
600 Supplies	632,771			632,771	
740 Depreciation	19,948			19,948	
810 Dues and Fees	172			172	561
890 Miscellaneous Expenditures					
Total Operating Expenses	\$1,377,730			\$1,377,730	\$3,703,456
Operating Income (Loss)	(\$815,445)			(\$815,445)	\$349,343
Non Operating Revenues (Expenses)					
6500 Earnings on Investments	17,757			17,757	171,079
6920 Contributions and Donations from Private Sources	1,722			1,722	
6930 Gains or Losses on Sale of Fixed Assets					
6991 Refunds of a Prior Year Expenditure	21,242			21,242	
7000 Revenue from State Sources	77,617			77,617	
8000 Revenue from Federal Sources	815,611			815,611	
9990 Insurance Recoveries					
820 Claims and Judgments Against the LEA					
830 Interest					
TOTAL Non Operating Revenues (Expenses)	\$933,949			\$933,949	\$171,079
Income (Loss) Before Contributions And Transfers	\$118,504			\$118,504	\$520,422

Amounts Expressed in Whole Dollars	<u>Food Service</u> <u>(51)</u>	<u>Child Care Operations</u> <u>(52)</u>	<u>Other Enterprise</u> <u>(58)</u>	<u>TOTAL</u>	<u>Internal Service</u> <u>(60)</u>
Contributions, Transfers, and Special and Extraordinary Items					
5200 Interfund Transfers – Out					
5300 Transfers Out to Component Units/Primary Governments					
5520 Special Items – Losses					
5530 Extraordinary Items – Losses					
9300 Interfund Transfers - IN	15,197			15,197	
9500 Capital Contributions					
9700 Transfers IN From Component Units/Primary Governments					
9920 Special Items – Gains					
9930 Extraordinary Items – Gains					
Change In Net Position	\$133,701			\$133,701	\$520,422
0002 Net Position - Beginning of Fiscal Year	526,706			526,706	8,077,942
0003 Accounting Changes / Residual Equity Transfers					
Net Position - End Of Year	\$660,407			\$660,407	\$8,598,364

LEA : 113362303 Eastern Lancaster County SD

Printed 11/19/2019 11:25:53 AM

Amounts Expressed in Whole Dollars	<u>Food Service</u> <u>(51)</u>	<u>Child Care Operations</u> <u>(52)</u>	<u>Other Enterprise</u> <u>(58)</u>	<u>TOTAL</u>	<u>Internal Service(60)</u>
Cash Flows From Operating Activities					
0011 Cash Receipts From Users	565,984			565,984	
0012 Cash Receipts From Assessments Made to Other Funds					3,911,439
0013 Cash Receipts From Earnings on Investments					
0014 Cash Receipts From Other Operating Revenue					
0015 Cash Payments To Employees For Services	281,659			281,659	
0016 Cash Payments For Insurance Claims					3,778,963
0017 Cash Payments To Suppliers For Goods and Services	853,798			853,798	
0018 Cash Payments For Other Operating Expenses					561
Net Cash Provided By (Used For) Operating Activities	(\$569,473)			(\$569,473)	\$131,915
Cash Flows From Non-Capital Financing Activities					
0021 Receipts From Local Sources - 6000	1,722			1,722	
0022 Receipts From State Sources - 7000	79,147			79,147	
0023 Receipts From Federal Sources -8000	736,895			736,895	
0024 Notes and Loans Received (Repaid)					
0025 Interest Paid on Notes/Loans - 5100-830					
0026 Operating Transfers In (Out)/Residual Equity Trans	15,197			15,197	
0027 Operating Transfers In (Out) Primary Government / Comp Unit					
0028 Receipts From Refund of Prior Year Expenditures - 6991	21,242			21,242	
0029 Special and Extraordinary Gains (losses)					
0030 Receipts from Insurance Recoveries -9990					
Net Cash Prov By (Used for) Non-Capital Financing Activities	\$854,203			\$854,203	
Cash Flows From Capital and Related Financing Activities					
0031 Payments For Fac Acq, Const, and Imp - 4000					
0032 Gain / (Loss) on Sale of Fixed Assets - 6930					
0033 Proceeds From Extended Term Financing - 9200					
0034 Principal Paid on Financing Agreements					
0035 Interest Paid on Financing Agreements - 5100-830					
0036 (Inc) Dec in Contributed Capital					
Net Cash Prov By (Used for) Capital and Related Financing Activities					
Cash Flows From Investing Activities					
0041 Earnings on Investments - 6500	17,757			17,757	171,079
0042 Purchase of Inv Securities / Deposits to Inv Pools					6,009,411
0043 Receipts From Investment Pool Withdrawals					
0044 Proceeds from Sale and Maturity of Inv Securities					

LEA : 113362303 Eastern Lancaster County SD

Printed 11/19/2019 11:25:53 AM

0045 Loans Received (Paid)

Net Cash Prov By (Used for) Investing Activities	\$17,757	\$17,757	\$6,180,490
--	----------	----------	-------------

LEA : 113362303 Eastern Lancaster County SD

Printed 11/19/2019 11:25:53 AM

	<u>Food Service</u> <u>(51)</u>	<u>Child Care Operations</u> <u>(52)</u>	<u>Other Enterprise</u> <u>(58)</u>	<u>TOTAL</u>	<u>Internal Service</u> <u>(60)</u>
Net Increase (Decrease) in Cash Flows	302,487			302,487	6,312,405
0004 Cash and Cash Equivalents Beginning of Year	749,317			749,317	2,334,522
Cash and Cash Equivalents at Year End	\$1,051,804			\$1,051,804	\$8,646,927
Reconciliation of Operating Income (Loss) To Net Cash Provided by (Used For) Operating Activities					
0005 Operating Income (Loss) per REP	(815,445)			(815,445)	349,343
Adjustments					
0051 Depreciation and Net Amortization	19,948			19,948	
0052 Provision for Uncollectible Accounts					
0053 Other Adjustments	104,412			104,412	
Effect of Changes in Assets, Liabilities, Deferred Outflows and Deferred Inflows					
0054 (Inc) Dec In Accounts Receivable (0120-0150)	150,578			150,578	(141,360)
0055 Advances to Other Funds (0160)					
0056 (Inc) Dec in Inventories (0170)	(2,136)			(2,136)	
0057 (Inc) Dec in Prepaid Expenses (0180)					
0058 (Inc) Dec in Other Current or Noncurrent Assets					
0064 Deferred Outflows (0910)	9,424			9,424	
0059 Inc (Dec) in Accounts Payable (0400-0450)	(22,538)			(22,538)	3,421
0060 Inc (Dec) in Accrued Salaries/Benefits (0461)	(681)			(681)	(79,489)
0065 Inc (Dec) in Net Pension Liabilities (0570)	(17,719)			(17,719)	
0066 Inc (Dec) in Other Postemp Benefit Oblig (0560)					
0061 Inc (Dec) in Payroll Deductions/Withholding (0462)					
0062 Inc (Dec) in Unearned Revenue (0480)	2,692			2,692	
0063 Inc (Dec) in Other Current or Noncurrent Liabilities					
0067 Deferred Inflows (0950)	1,992			1,992	
Total Adjustments	\$245,972			\$245,972	(\$217,428)
Cash Provided By (Used for) Total	(\$569,473)			(\$569,473)	\$131,915

COMBINED STATEMENT OF CASH FLOWS
SCHEDULE OF NONCASH INVESTING, CAPITAL, AND FINANCING ACTIVITIES

Explanation of Transaction and Balance Sheet Effect	Amount
USDA Donated Commodities	104,412
Total	\$104,412

LEA : 113362303 Eastern Lancaster County SD

Printed 11/19/2019 11:25:55 AM

Amounts Expressed in Whole Dollars	<u>Private Purpose Trust</u> <u>(71)</u>	<u>Investment Trust</u> <u>(72)</u>	<u>Pension Trust</u> <u>(73)</u>	<u>Activity</u> <u>(81)</u>
Assets And Deferred Outflows Of Resources				
Assets				
0100 Cash and Cash Equivalents	78,652			88,622
0110 Investments				
0130 Due From Other Funds				
0147 Due from Component Unit				
0150 Other Receivables				135
0170 Inventories				
0180 Prepaid Expenses (Expenditures)				
0190 Other Current Assets				
0220 Buildings and Building Improvements (Net)				
0230 Machinery, Equipment and Furniture (Net)				
Total Assets	\$78,652			\$88,757
0910 Deferred Outflows of Resources				
Total Assets And Deferred Outflows Of Resources	\$78,652			\$88,757

LEA : 113362303 Eastern Lancaster County SD

Printed 11/19/2019 11:25:55 AM

Amounts Expressed in Whole Dollars

	<u>Other Agency</u> <u>(89)</u>	<u>Discrete Component Units</u> <u>(98)</u>	<u>Discrete Component Units</u> <u>(99)</u>	<u>Total Fiduciary Funds</u>
Assets And Deferred Outflows Of Resources				
Assets				
0100 Cash and Cash Equivalents				167,274
0110 Investments				
0130 Due From Other Funds				
0147 Due from Component Unit				
0150 Other Receivables				135
0170 Inventories				
0180 Prepaid Expenses (Expenditures)				
0190 Other Current Assets				
0220 Buildings and Building Improvements (Net)				
0230 Machinery, Equipment and Furniture (Net)				
Total Assets				\$167,409
0910 Deferred Outflows of Resources				
Total Assets And Deferred Outflows Of Resources				\$167,409

LEA : 113362303 Eastern Lancaster County SD

Printed 11/19/2019 11:25:55 AM

Amounts Expressed in Whole Dollars	<u>Private Purpose Trust</u> <u>(71)</u>	<u>Investment Trust</u> <u>(72)</u>	<u>Pension Trust</u> <u>(73)</u>	<u>Activity</u> <u>(81)</u>
Liabilities, Deferred Inflows Of Resources And Net Position				
Liabilities				
0400 Due to Other Funds				
0411 Due to Other Governments				
0412 Due to Primary Government				
0413 Due to Component Unit				
0420 Accounts Payable				6,803
0430 Contracts Payable				
0450 Short-Term Payables				
0461 Accrued Salaries and Benefits				
0462 Payroll Deductions and Withholding				
0480 Unearned Revenues				
0490 Other Current Liabilities				81,954
Total Liabilities				\$88,757
0950 Deferred Inflows of Resources				
Net Position				
0791 Net Investment in Capital Assets				
0009 Restricted Net Position (0792 – 0798)	78,652			
0799 Unrestricted Net Position				
Total Net Position	\$78,652			
Total Liabilities, Deferred Inflows Of Resources And Net Position	\$78,652			\$88,757

LEA : 113362303 Eastern Lancaster County SD

Printed 11/19/2019 11:25:55 AM

Amounts Expressed in Whole Dollars

<u>Other Agency</u> <u>(89)</u>	<u>Discrete Component Units</u> <u>(98)</u>	<u>Discrete Component Units</u> <u>(99)</u>	<u>Total Fiduciary Funds</u>
------------------------------------	--	--	------------------------------

Liabilities, Deferred Inflows Of Resources And Net Position

Liabilities

0400 Due to Other Funds			
0411 Due to Other Governments			
0412 Due to Primary Government			
0413 Due to Component Unit			
0420 Accounts Payable			6,803
0430 Contracts Payable			
0450 Short-Term Payables			
0461 Accrued Salaries and Benefits			
0462 Payroll Deductions and Withholding			
0480 Unearned Revenues			
0490 Other Current Liabilities			81,954
Total Liabilities			\$88,757

0950 Deferred Inflows of Resources

Net Position

0791 Net Investment in Capital Assets			
0009 Restricted Net Position (0792 – 0798)			78,652
0799 Unrestricted Net Position			
Total Net Position			\$78,652
Total Liabilities, Deferred Inflows Of Resources And Net Position			\$167,409

LEA : 113362303 Eastern Lancaster County SD

Printed 11/19/2019 11:25:57 AM

Amounts Expressed in Whole Dollars	<u>Private Purpose Trust</u> <u>(71)</u>	<u>Investment Trust</u> <u>(72)</u>	<u>Pension Trust</u> <u>(73)</u>	<u>Discrete Component</u> <u>Units</u> <u>(98)</u>	<u>Discrete Component</u> <u>Units</u> <u>(99)</u>	<u>Total Fiduciary</u> <u>Funds</u>
Additions						
0091 Gifts and Contributions	3,985					3,985
0092 Other Additions	1,539					1,539
Deductions						
0093 Scholarships Awarded	1,000					1,000
0094 Other Deductions						
Change In Net Position	\$4,524					\$4,524
0006 Net Position – Beginning of Fiscal Year	74,128					74,128
0007 Net Position Held in Trust for Pension Benefits						
Net Position - End of Fiscal Year	\$78,652					\$78,652

	Revenue Reported In Current Year	Current Year Tax Accrual	Prior Year Tax Accrual	Taxes Collected In Current Year
Revenue from Local Sources				
6111 Current Real Estate Taxes	32,372,290.62			32,372,290.62
6112 Interim Real Estate Taxes	281,333.86	3,503.33	50,079.19	327,909.72
6113 Public Utility Realty Taxes	36,209.45			36,209.45
6114 Payments in Lieu of Current Taxes - State / Local	188,871.35			188,871.35
6143 Current Act 511 Local Services Taxes	165,793.38	38,030.56	38,298.49	166,061.31
6151 Current Act 511 Earned Income Taxes	3,963,876.25	707,705.55	730,215.52	3,986,386.22
6153 Current Act 511 Real Estate Transfer Taxes	692,366.13	64,945.73	72,595.18	700,015.58
6411 Delinquent Real Estate Taxes	606,436.43	130,961.89	172,224.93	647,699.47
6500 Earnings on Investments	541,735.77			
6700 Revenues from LEA Activities	127,519.14			
6832 Federal IDEA Revenue Received as Pass Through	527,461.00			
6839 Federal Revenue Received from Other Sources	2,864.42			
6910 Rentals	60,445.90			
6920 Contributions and Donations from Private Sources	12,084.19			
6942 Summer School Tuition	6,725.00			
6944 Receipts from Other LEAs in Pennsylvania - Education	2,671,634.17			
6961 Transportation Services Provided Other Pennsylvania LEAs	20,386.80			
6962 Other Services Provided Other Pennsylvania LEAs	313,215.59			
6991 Refunds of a Prior Year Expenditure	113,144.51			
6999 Other Revenues Not Specified Above	39,657.36			
TOTAL Revenue from Local Sources	\$42,744,051.32	\$945,147.06	\$1,063,413.31	\$38,425,443.72

	Revenue Reported In Current Year			
Revenue from State Sources				
7110 Basic Education Funding	4,574,626.24			
7160 Tuition for Orphans Subsidy	70,709.39			
7220 Vocational Education	65,280.40			
7271 Special Education funds for School-Aged Pupils	1,672,895.30			
7311 Pupil Transportation Subsidy	1,258,648.32			
7312 Nonpublic and Charter School Pupil Transportation Subsidy	177,870.00			
7320 Rental and Sinking Fund Payments / Building Reimbursement Subsidy	1,099,635.62			
7330 Health Services (Medical, Dental, Nurse, Act 25)	72,206.89			
7340 State Property Tax Reduction Allocation	446,041.11			
7361 School Safety and Security Grants	25,000.00			
7505 Ready to Learn Block Grant	247,418.00			
7810 State Share of Social Security and Medicare Taxes	771,114.17			
7820 State Share of Retirement Contributions	3,674,308.85			
TOTAL Revenue from State Sources	\$14,155,754.29			

	Revenue Reported In Current Year			
<u>Revenue from Federal Sources</u>				
8514 NCLB, Title I - Improving the Academic Achievement of the Disadvantaged	832,915.81			
8515 NCLB, Title II - Preparing, Training and Recruiting High Quality Teachers and Principals	176,694.00			
8517 NCLB, Title IV - 21St Century Schools	44,356.58			
8810 School-Based Access Medicaid Reimbursement Program (SBAP) Reimbursements (Access)	559,693.62			
8820 Medical Assistance Reimbursement for Administrative Claiming (Quarterly) Program	18,643.81			
TOTAL Revenue from Federal Sources	\$1,632,303.82			

	Revenue Reported In Current Year			
<u>Other Financing Sources</u>				
9400 Sale of or Compensation for Loss of Fixed Assets	7,005.93			
TOTAL Other Financing Sources	\$7,005.93			
TOTAL FROM ALL SOURCES	\$58,539,115.36	\$945,147.06	\$1,063,413.31	\$38,425,443.72

Revenue from Local Sources	42,744,051.32
Revenue from State Sources	14,155,754.29
Revenue from Federal Sources	1,632,303.82
Other Financing Sources	7,005.93
TOTAL FROM ALL SOURCES	\$58,539,115.36

LEA : 113362303 Eastern Lancaster County SD

Printed 11/19/2019 11:26:07 AM

General Fund (10)

1000 Instruction	Total
100 Personnel Services – Salaries	
100 Personnel Services – Salaries	14,688,313.05
Total Personnel Services – Salaries	\$14,688,313.05
200 Personnel Services – Employee Benefits	
210 Group Insurance – Contracted Provider	50,843.20
220 Social Security Contributions	1,091,329.47
230 PSERS Retirement Contributions	4,880,992.83
260 Workers’ Compensation	99,089.26
270 Group Insurance – Self-Insurance	2,681,436.98
291 Other Retirement Plans	28,350.00
Total Personnel Services – Employee Benefits	\$8,832,041.74
300 Purchased Professional and Technical Services	
322 Professional Educational Services – Ius	613,177.86
329 Professional Educational Services – Other	2,700,248.39
330 Other Professional Services	116,595.54
360 Employee Training and Development Services	624.00
Total Purchased Professional and Technical Services	\$3,430,645.79
400 Purchased Property Services	
430 Repairs and Maintenance Services	11,799.19
440 Rentals	236.40
Total Purchased Property Services	\$12,035.59
500 Other Purchased Services	
510 Student Transportation Services	40,854.38
520 Insurance – General	1,990.00
530 Communications	16,450.05
550 Printing and Binding	7,102.23
561 Tuition To Other School Districts Within the State	82,817.74
562 Tuition To Pennsylvania Charter Schools	890,750.67
564 Tuition To Career and Technology Centers	1,158,591.28
568 Tuition To Private Residential Rehabilitative Institutions (PRRI) [In-State] and Detention Centers	3,465.10
569 Tuition – Other	267,762.44
580 Travel	70,076.76
594 IU Payment By Withholding for Institutionalized Children’s Programs – Special Classes	658.86
Total Other Purchased Services	\$2,540,519.51
600 Supplies	
610 General Supplies	680,822.59
620 Energy	61.32
630 Food	7,842.45
640 Books and Periodicals	48,377.61
650 Supplies & Fees – Technology Related	1,325,397.62
Total Supplies	\$2,062,501.59
700 Property	
762 Capitalized Equipment - Replacement	29,300.00

General Fund (10)

1000 Instruction	<u>Total</u>
700 <u>Property</u>	
766 Capitalized Technology Equipment – Replacement	98,429.00
Total Property	\$127,729.00
800 <u>Other Objects</u>	
810 Dues and Fees	5,715.26
890 Miscellaneous Expenditures	1,948.00
Total Other Objects	\$7,663.26
Total 1000 Instruction	\$31,701,449.53

LEA : 113362303 Eastern Lancaster County SD

Printed 11/19/2019 11:26:07 AM

General Fund (10)

1100 Regular Programs – Elementary / Secondary	Elementary	Secondary	Federal	Total
100 Personnel Services – Salaries				
100 Personnel Services – Salaries	5,783,306.38	5,442,709.61	735,773.78	11,961,789.77
Total Personnel Services – Salaries	\$5,783,306.38	\$5,442,709.61	\$735,773.78	\$11,961,789.77
200 Personnel Services – Employee Benefits				
210 Group Insurance – Contracted Provider	22,383.92	19,783.40	765.05	42,932.37
220 Social Security Contributions	428,297.91	406,644.96	54,456.43	889,399.30
230 PSERS Retirement Contributions	2,008,181.21	1,865,832.72	100,728.97	3,974,742.90
260 Workers' Compensation	40,106.80	35,681.27	4,938.30	80,726.37
270 Group Insurance – Self-Insurance	1,077,135.81	1,012,506.69	107,917.87	2,197,560.37
291 Other Retirement Plans		28,350.00		28,350.00
Total Personnel Services – Employee Benefits	\$3,576,105.65	\$3,368,799.04	\$268,806.62	\$7,213,711.31
300 Purchased Professional and Technical Services				
329 Professional Educational Services – Other	289,550.18	215,082.00		504,632.18
330 Other Professional Services	1,177.89	1,393.67		2,571.56
Total Purchased Professional and Technical Services	\$290,728.07	\$216,475.67		\$507,203.74
400 Purchased Property Services				
430 Repairs and Maintenance Services	1,365.50	9,798.19		11,163.69
440 Rentals		236.40		236.40
Total Purchased Property Services	\$1,365.50	\$10,034.59		\$11,400.09
500 Other Purchased Services				
510 Student Transportation Services	26,152.42	8,452.68		34,605.10
520 Insurance – General		1,990.00		1,990.00
530 Communications	5,779.15	8,939.70		14,718.85
550 Printing and Binding	2,820.98	3,570.00		6,390.98
561 Tuition To Other School Districts Within the State		41,493.44		41,493.44
562 Tuition To Pennsylvania Charter Schools	133,357.17	444,904.84		578,262.01
568 Tuition To Private Residential Rehabilitative Institutions (PRRI) [In-State] and Detention Centers		484.60		484.60
580 Travel	4,516.44	3,577.24		8,093.68
Total Other Purchased Services	\$172,626.16	\$513,412.50		\$686,038.66
600 Supplies				
610 General Supplies	230,630.56	419,444.47		650,075.03
630 Food	959.39	1,363.35	96.41	2,419.15
640 Books and Periodicals	27,412.40	15,226.64		42,639.04
650 Supplies & Fees – Technology Related	718,298.09	598,533.24		1,316,831.33
Total Supplies	\$977,300.44	\$1,034,567.70	\$96.41	\$2,011,964.55
700 Property				
762 Capitalized Equipment - Replacement		29,300.00		29,300.00
766 Capitalized Technology Equipment – Replacement		98,429.00		98,429.00
Total Property		\$127,729.00		\$127,729.00
800 Other Objects				
810 Dues and Fees	138.00	341.51		479.51

LEA : 113362303 Eastern Lancaster County SD

Printed 11/19/2019 11:26:07 AM

General Fund (10)

1100 Regular Programs – Elementary / Secondary	<u>Elementary</u>	<u>Secondary</u>	<u>Federal</u>	<u>Total</u>
800 <u>Other Objects</u>				
890 Miscellaneous Expenditures	645.00	1,204.00		1,849.00
Total Other Objects	\$783.00	\$1,545.51		\$2,328.51
Total 1100 Regular Programs – Elementary / Secondary	\$10,802,215.20	\$10,715,273.62	\$1,004,676.81	\$22,522,165.63

LEA : 113362303 Eastern Lancaster County SD

Printed 11/19/2019 11:26:07 AM

General Fund (10)				
1110 Regular Programs				
	<u>Elementary</u>	<u>Secondary</u>	<u>Federal</u>	<u>Total</u>
100 <u>Personnel Services – Salaries</u>				
100 Personnel Services – Salaries	5,783,306.38	5,442,709.61		11,226,015.99
Total Personnel Services – Salaries	\$5,783,306.38	\$5,442,709.61		\$11,226,015.99
200 <u>Personnel Services – Employee Benefits</u>				
210 Group Insurance – Contracted Provider	22,383.92	19,783.40		42,167.32
220 Social Security Contributions	428,297.91	406,644.96		834,942.87
230 PSERS Retirement Contributions	2,008,181.21	1,865,832.72		3,874,013.93
260 Workers' Compensation	40,106.80	35,681.27		75,788.07
270 Group Insurance – Self-Insurance	1,077,135.81	1,012,506.69		2,089,642.50
291 Other Retirement Plans		28,350.00		28,350.00
Total Personnel Services – Employee Benefits	\$3,576,105.65	\$3,368,799.04		\$6,944,904.69
300 <u>Purchased Professional and Technical Services</u>				
329 Professional Educational Services – Other	289,550.18	215,082.00		504,632.18
330 Other Professional Services	1,177.89	1,393.67		2,571.56
Total Purchased Professional and Technical Services	\$290,728.07	\$216,475.67		\$507,203.74
400 <u>Purchased Property Services</u>				
430 Repairs and Maintenance Services	1,365.50	9,798.19		11,163.69
440 Rentals		236.40		236.40
Total Purchased Property Services	\$1,365.50	\$10,034.59		\$11,400.09
500 <u>Other Purchased Services</u>				
510 Student Transportation Services	26,152.42	8,452.68		34,605.10
520 Insurance – General		1,990.00		1,990.00
530 Communications	5,779.15	8,939.70		14,718.85
550 Printing and Binding	2,820.98	3,570.00		6,390.98
561 Tuition To Other School Districts Within the State		41,493.44		41,493.44
562 Tuition To Pennsylvania Charter Schools	133,357.17	444,904.84		578,262.01
568 Tuition To Private Residential Rehabilitative Institutions (PRRI) [In-State] and Detention Centers		484.60		484.60
580 Travel	4,516.44	3,577.24		8,093.68
Total Other Purchased Services	\$172,626.16	\$513,412.50		\$686,038.66
600 <u>Supplies</u>				
610 General Supplies	230,630.56	419,444.47		650,075.03
630 Food	959.39	1,363.35		2,322.74
640 Books and Periodicals	27,412.40	15,226.64		42,639.04
650 Supplies & Fees – Technology Related	718,298.09	598,533.24		1,316,831.33
Total Supplies	\$977,300.44	\$1,034,567.70		\$2,011,868.14
700 <u>Property</u>				
762 Capitalized Equipment - Replacement		29,300.00		29,300.00
766 Capitalized Technology Equipment – Replacement		98,429.00		98,429.00
Total Property		\$127,729.00		\$127,729.00
800 <u>Other Objects</u>				
810 Dues and Fees	138.00	341.51		479.51

LEA : 113362303 Eastern Lancaster County SD

Printed 11/19/2019 11:26:07 AM

General Fund (10)

1110 Regular Programs

	<u>Elementary</u>	<u>Secondary</u>	<u>Federal</u>	<u>Total</u>
800 <u>Other Objects</u>				
890 Miscellaneous Expenditures	645.00	1,204.00		1,849.00
Total Other Objects	\$783.00	\$1,545.51		\$2,328.51
Total 1110 Regular Programs	\$10,802,215.20	\$10,715,273.62		\$21,517,488.82

LEA : 113362303 Eastern Lancaster County SD

Printed 11/19/2019 11:26:07 AM

General Fund (10)

1190 Federally-Funded Regular Programs	<u>Elementary</u>	<u>Secondary</u>	<u>Federal</u>	<u>Total</u>
100 <u>Personnel Services – Salaries</u>				
100 Personnel Services – Salaries			735,773.78	735,773.78
Total Personnel Services – Salaries			\$735,773.78	\$735,773.78
200 <u>Personnel Services – Employee Benefits</u>				
210 Group Insurance – Contracted Provider			765.05	765.05
220 Social Security Contributions			54,456.43	54,456.43
230 PSERS Retirement Contributions			100,728.97	100,728.97
260 Workers' Compensation			4,938.30	4,938.30
270 Group Insurance – Self-Insurance			107,917.87	107,917.87
Total Personnel Services – Employee Benefits			\$268,806.62	\$268,806.62
600 <u>Supplies</u>				
630 Food			96.41	96.41
Total Supplies			\$96.41	\$96.41
Total 1190 Federally-Funded Regular Programs			\$1,004,676.81	\$1,004,676.81

LEA : 113362303 Eastern Lancaster County SD

Printed 11/19/2019 11:26:07 AM

General Fund (10)				
1200 Special Programs – Elementary / Secondary	<u>Elementary</u>	<u>Secondary</u>	<u>Federal</u>	<u>Total</u>
100 <u>Personnel Services – Salaries</u>				
100 Personnel Services – Salaries	1,151,593.64	993,879.51	415,090.38	2,560,563.53
Total Personnel Services – Salaries	\$1,151,593.64	\$993,879.51	\$415,090.38	\$2,560,563.53
200 <u>Personnel Services – Employee Benefits</u>				
210 Group Insurance – Contracted Provider	3,755.08	3,532.00	218.75	7,505.83
220 Social Security Contributions	85,823.85	72,874.57	30,754.87	189,453.29
230 PSERS Retirement Contributions	428,617.66	354,522.69	67,796.33	850,936.68
260 Workers' Compensation	7,765.84	6,687.51	2,794.09	17,247.44
270 Group Insurance – Self-Insurance	228,665.18	172,807.03	64,310.76	465,782.97
Total Personnel Services – Employee Benefits	\$754,627.61	\$610,423.80	\$165,874.80	\$1,530,926.21
300 <u>Purchased Professional and Technical Services</u>				
322 Professional Educational Services – Ius	142,474.98	210,942.25	239,882.00	593,299.23
329 Professional Educational Services – Other	1,087,917.81	909,519.50	149,030.00	2,146,467.31
330 Other Professional Services	12,038.49	99,730.93		111,769.42
Total Purchased Professional and Technical Services	\$1,242,431.28	\$1,220,192.68	\$388,912.00	\$2,851,535.96
400 <u>Purchased Property Services</u>				
430 Repairs and Maintenance Services		635.50		635.50
Total Purchased Property Services		\$635.50		\$635.50
500 <u>Other Purchased Services</u>				
510 Student Transportation Services		718.72		718.72
530 Communications	248.01	1,248.81		1,496.82
550 Printing and Binding	318.13	318.12		636.25
561 Tuition To Other School Districts Within the State		41,324.30		41,324.30
562 Tuition To Pennsylvania Charter Schools	96,940.80	215,547.86		312,488.66
568 Tuition To Private Residential Rehabilitative Institutions (PRRI) [In-State] and Detention Centers	185.50	2,795.00		2,980.50
569 Tuition – Other	35,828.94	231,933.50		267,762.44
580 Travel	18,628.97	42,876.01		61,504.98
594 IU Payment By Withholding for Institutionalized Children's Programs – Special Classes		658.86		658.86
Total Other Purchased Services	\$152,150.35	\$537,421.18		\$689,571.53
600 <u>Supplies</u>				
610 General Supplies	9,728.86	6,456.94		16,185.80
630 Food	2,053.37	3,240.90		5,294.27
640 Books and Periodicals	2,842.95	1,087.42		3,930.37
650 Supplies & Fees – Technology Related	502.95	186.42		689.37
Total Supplies	\$15,128.13	\$10,971.68		\$26,099.81
800 <u>Other Objects</u>				
810 Dues and Fees	1,360.00	1,360.00		2,720.00
890 Miscellaneous Expenditures	99.00			99.00
Total Other Objects	\$1,459.00	\$1,360.00		\$2,819.00
Total 1200 Special Programs – Elementary / Secondary	\$3,317,390.01	\$3,374,884.35	\$969,877.18	\$7,662,151.54

LEA : 113362303 Eastern Lancaster County SD

Printed 11/19/2019 11:26:07 AM

General Fund (10)					
1210 Life Skills Support		Elementary	Secondary	Federal	Total
100 <u>Personnel Services – Salaries</u>					
100 Personnel Services – Salaries		132,822.18	66,283.46		199,105.64
Total Personnel Services – Salaries		\$132,822.18	\$66,283.46		\$199,105.64
200 <u>Personnel Services – Employee Benefits</u>					
210 Group Insurance – Contracted Provider		488.00	497.00		985.00
220 Social Security Contributions		9,895.12	4,828.51		14,723.63
230 PSERS Retirement Contributions		44,402.46	22,158.50		66,560.96
260 Workers' Compensation		892.83	445.49		1,338.32
270 Group Insurance – Self-Insurance		27,826.67	19,066.35		46,893.02
Total Personnel Services – Employee Benefits		\$83,505.08	\$46,995.85		\$130,500.93
300 <u>Purchased Professional and Technical Services</u>					
329 Professional Educational Services – Other		91,505.62	150,972.07		242,477.69
330 Other Professional Services			291.08		291.08
Total Purchased Professional and Technical Services		\$91,505.62	\$151,263.15		\$242,768.77
500 <u>Other Purchased Services</u>					
530 Communications		3.54	67.20		70.74
580 Travel		3,527.87	3,527.87		7,055.74
Total Other Purchased Services		\$3,531.41	\$3,595.07		\$7,126.48
600 <u>Supplies</u>					
610 General Supplies		234.42	997.90		1,232.32
630 Food			641.77		641.77
640 Books and Periodicals		564.13	772.90		1,337.03
650 Supplies & Fees – Technology Related			186.42		186.42
Total Supplies		\$798.55	\$2,598.99		\$3,397.54
Total 1210 Life Skills Support		\$312,162.84	\$270,736.52		\$582,899.36

LEA : 113362303 Eastern Lancaster County SD

Printed 11/19/2019 11:26:07 AM

General Fund (10)

1220 Sensory Support

	<u>Elementary</u>	<u>Secondary</u>	<u>Federal</u>	<u>Total</u>
100 <u>Personnel Services – Salaries</u>				
100 Personnel Services – Salaries	60,779.89	924.00	112,343.40	174,047.29
Total Personnel Services – Salaries	\$60,779.89	\$924.00	\$112,343.40	\$174,047.29
200 <u>Personnel Services – Employee Benefits</u>				
210 Group Insurance – Contracted Provider	205.00	7.50		212.50
220 Social Security Contributions	4,613.60	70.69	8,582.51	13,266.80
230 PSERS Retirement Contributions	35,788.61	1,507.98	17,275.68	54,572.27
260 Workers' Compensation	408.83	6.28	759.28	1,174.39
270 Group Insurance – Self-Insurance	7,316.07	812.89	6,939.68	15,068.64
Total Personnel Services – Employee Benefits	\$48,332.11	\$2,405.34	\$33,557.15	\$84,294.60
300 <u>Purchased Professional and Technical Services</u>				
322 Professional Educational Services – lus	2,744.70	23,226.58	29,487.00	55,458.28
330 Other Professional Services	6,535.72	93,458.26		99,993.98
Total Purchased Professional and Technical Services	\$9,280.42	\$116,684.84	\$29,487.00	\$155,452.26
500 <u>Other Purchased Services</u>				
530 Communications	5.94	13.13		19.07
550 Printing and Binding	124.50	124.50		249.00
580 Travel	23.64	7.83		31.47
Total Other Purchased Services	\$154.08	\$145.46		\$299.54
600 <u>Supplies</u>				
610 General Supplies	411.83			411.83
640 Books and Periodicals	107.70	107.70		215.40
Total Supplies	\$519.53	\$107.70		\$627.23
Total 1220 Sensory Support	\$119,066.03	\$120,267.34	\$175,387.55	\$414,720.92

LEA : 113362303 Eastern Lancaster County SD

Printed 11/19/2019 11:26:07 AM

General Fund (10)

1230 Emotional Support	Elementary	Secondary	Federal	Total
100 Personnel Services – Salaries				
100 Personnel Services – Salaries	409,920.24	369,982.12	169,351.98	949,254.34
Total Personnel Services – Salaries	\$409,920.24	\$369,982.12	\$169,351.98	\$949,254.34
200 Personnel Services – Employee Benefits				
210 Group Insurance – Contracted Provider	1,148.50	1,153.00	218.75	2,520.25
220 Social Security Contributions	30,445.48	26,921.95	12,728.17	70,095.60
230 PSERS Retirement Contributions	154,990.85	133,675.31	28,223.59	316,889.75
260 Workers' Compensation	2,759.35	2,479.17	1,138.34	6,376.86
270 Group Insurance – Self-Insurance	84,686.05	68,973.70	24,817.24	178,476.99
Total Personnel Services – Employee Benefits	\$274,030.23	\$233,203.13	\$67,126.09	\$574,359.45
300 Purchased Professional and Technical Services				
322 Professional Educational Services – lus	71,931.22	176,295.97	55,423.00	303,650.19
329 Professional Educational Services – Other	683,540.95	532,557.05		1,216,098.00
330 Other Professional Services	3,763.09	5,824.99		9,588.08
Total Purchased Professional and Technical Services	\$759,235.26	\$714,678.01	\$55,423.00	\$1,529,336.27
400 Purchased Property Services				
430 Repairs and Maintenance Services		635.50		635.50
Total Purchased Property Services		\$635.50		\$635.50
500 Other Purchased Services				
510 Student Transportation Services		718.72		718.72
530 Communications	24.75	420.27		445.02
561 Tuition To Other School Districts Within the State		41,324.30		41,324.30
562 Tuition To Pennsylvania Charter Schools	24,235.20	34,995.63		59,230.83
568 Tuition To Private Residential Rehabilitative Institutions (PRRI) [In-State] and Detention Centers		2,795.00		2,795.00
569 Tuition – Other	35,828.94	231,933.50		267,762.44
580 Travel	7,055.74	32,210.74		39,266.48
Total Other Purchased Services	\$67,144.63	\$344,398.16		\$411,542.79
600 Supplies				
610 General Supplies	1,628.30	3,935.01		5,563.31
630 Food	2,053.37	2,585.60		4,638.97
640 Books and Periodicals	1,226.16	99.00		1,325.16
Total Supplies	\$4,907.83	\$6,619.61		\$11,527.44
Total 1230 Emotional Support	\$1,515,238.19	\$1,669,516.53	\$291,901.07	\$3,476,655.79

LEA : 113362303 Eastern Lancaster County SD

Printed 11/19/2019 11:26:07 AM

General Fund (10)

1240 Academic Support

	Elementary	Secondary	Federal	Total
100 <u>Personnel Services – Salaries</u>				
100 Personnel Services – Salaries	434,117.33	487,703.93	64,442.00	986,263.26
Total Personnel Services – Salaries	\$434,117.33	\$487,703.93	\$64,442.00	\$986,263.26
200 <u>Personnel Services – Employee Benefits</u>				
210 Group Insurance – Contracted Provider	1,575.58	1,526.00		3,101.58
220 Social Security Contributions	32,489.42	35,973.24	4,678.41	73,141.07
230 PSERS Retirement Contributions	155,343.43	162,593.30	10,771.53	328,708.26
260 Workers' Compensation	2,938.63	3,292.96	433.06	6,664.65
270 Group Insurance – Self-Insurance	87,361.05	75,500.90	16,276.92	179,138.87
Total Personnel Services – Employee Benefits	\$279,708.11	\$278,886.40	\$32,159.92	\$590,754.43
300 <u>Purchased Professional and Technical Services</u>				
322 Professional Educational Services – lus	1,485.40	11,419.70	151,929.00	164,834.10
329 Professional Educational Services – Other	200,512.52	190,137.39		390,649.91
330 Other Professional Services	1,739.68	156.60		1,896.28
Total Purchased Professional and Technical Services	\$203,737.60	\$201,713.69	\$151,929.00	\$557,380.29
500 <u>Other Purchased Services</u>				
530 Communications	176.97	729.75		906.72
562 Tuition To Pennsylvania Charter Schools	72,705.60	180,552.23		253,257.83
568 Tuition To Private Residential Rehabilitative Institutions (PRRI) [In-State] and Detention Centers	185.50			185.50
580 Travel	4,376.13	3,601.70		7,977.83
Total Other Purchased Services	\$77,444.20	\$184,883.68		\$262,327.88
600 <u>Supplies</u>				
610 General Supplies	383.60	336.71		720.31
630 Food		13.53		13.53
640 Books and Periodicals	944.96	107.82		1,052.78
Total Supplies	\$1,328.56	\$458.06		\$1,786.62
800 <u>Other Objects</u>				
810 Dues and Fees	1,360.00	1,360.00		2,720.00
890 Miscellaneous Expenditures	99.00			99.00
Total Other Objects	\$1,459.00	\$1,360.00		\$2,819.00
Total 1240 Academic Support	\$997,794.80	\$1,155,005.76	\$248,530.92	\$2,401,331.48

LEA : 113362303 Eastern Lancaster County SD

Printed 11/19/2019 11:26:07 AM

General Fund (10)

1241 Learning Support – Public	Elementary	Secondary	Federal	Total
100 <u>Personnel Services – Salaries</u>				
100 Personnel Services – Salaries	368,679.33	398,896.17	64,442.00	832,017.50
Total Personnel Services – Salaries	\$368,679.33	\$398,896.17	\$64,442.00	\$832,017.50
200 <u>Personnel Services – Employee Benefits</u>				
210 Group Insurance – Contracted Provider	1,500.58	1,329.00		2,829.58
220 Social Security Contributions	27,542.03	29,471.82	4,678.41	61,692.26
230 PSERS Retirement Contributions	133,467.57	132,904.93	10,771.53	277,144.03
260 Workers' Compensation	2,493.75	2,689.05	433.06	5,615.86
270 Group Insurance – Self-Insurance	68,294.70	67,371.95	16,276.92	151,943.57
Total Personnel Services – Employee Benefits	\$233,298.63	\$233,766.75	\$32,159.92	\$499,225.30
300 <u>Purchased Professional and Technical Services</u>				
322 Professional Educational Services – lus	1,485.40	11,419.70	151,929.00	164,834.10
329 Professional Educational Services – Other	199,846.28	190,119.23		389,965.51
330 Other Professional Services	1,739.68	156.60		1,896.28
Total Purchased Professional and Technical Services	\$203,071.36	\$201,695.53	\$151,929.00	\$556,695.89
500 <u>Other Purchased Services</u>				
530 Communications	35.86	516.47		552.33
562 Tuition To Pennsylvania Charter Schools	72,705.60	180,552.23		253,257.83
568 Tuition To Private Residential Rehabilitative Institutions (PRRI) [In-State] and Detention Centers	185.50			185.50
580 Travel	4,376.13	3,601.70		7,977.83
Total Other Purchased Services	\$77,303.09	\$184,670.40		\$261,973.49
600 <u>Supplies</u>				
610 General Supplies	364.72	336.71		701.43
630 Food		13.53		13.53
640 Books and Periodicals	875.02	107.82		982.84
Total Supplies	\$1,239.74	\$458.06		\$1,697.80
Total 1241 Learning Support – Public	\$883,592.15	\$1,019,486.91	\$248,530.92	\$2,151,609.98

LEA : 113362303 Eastern Lancaster County SD

Printed 11/19/2019 11:26:07 AM

General Fund (10)

1243 Gifted Support

	<u>Elementary</u>	<u>Secondary</u>	<u>Federal</u>	<u>Total</u>
100 <u>Personnel Services – Salaries</u>				
100 Personnel Services – Salaries	65,438.00	88,807.76		154,245.76
Total Personnel Services – Salaries	\$65,438.00	\$88,807.76		\$154,245.76
200 <u>Personnel Services – Employee Benefits</u>				
210 Group Insurance – Contracted Provider	75.00	197.00		272.00
220 Social Security Contributions	4,947.39	6,501.42		11,448.81
230 PSERS Retirement Contributions	21,875.86	29,688.37		51,564.23
260 Workers' Compensation	444.88	603.91		1,048.79
270 Group Insurance – Self-Insurance	19,066.35	8,128.95		27,195.30
Total Personnel Services – Employee Benefits	\$46,409.48	\$45,119.65		\$91,529.13
300 <u>Purchased Professional and Technical Services</u>				
329 Professional Educational Services – Other	666.24	18.16		684.40
Total Purchased Professional and Technical Services	\$666.24	\$18.16		\$684.40
500 <u>Other Purchased Services</u>				
530 Communications	141.11	213.28		354.39
Total Other Purchased Services	\$141.11	\$213.28		\$354.39
600 <u>Supplies</u>				
610 General Supplies	18.88			18.88
640 Books and Periodicals	69.94			69.94
Total Supplies	\$88.82			\$88.82
800 <u>Other Objects</u>				
810 Dues and Fees	1,360.00	1,360.00		2,720.00
890 Miscellaneous Expenditures	99.00			99.00
Total Other Objects	\$1,459.00	\$1,360.00		\$2,819.00
Total 1243 Gifted Support	\$114,202.65	\$135,518.85		\$249,721.50

LEA : 113362303 Eastern Lancaster County SD

Printed 11/19/2019 11:26:07 AM

General Fund (10)

1270 Multi-Handicapped Support	<u>Elementary</u>	<u>Secondary</u>	<u>Federal</u>	<u>Total</u>
100 <u>Personnel Services – Salaries</u>				
100 Personnel Services – Salaries	113,954.00	68,986.00	68,953.00	251,893.00
Total Personnel Services – Salaries	\$113,954.00	\$68,986.00	\$68,953.00	\$251,893.00
200 <u>Personnel Services – Employee Benefits</u>				
210 Group Insurance – Contracted Provider	338.00	348.50		686.50
220 Social Security Contributions	8,380.23	5,080.18	4,765.78	18,226.19
230 PSERS Retirement Contributions	38,092.31	34,587.60	11,525.53	84,205.44
260 Workers' Compensation	766.20	463.61	463.41	1,693.22
270 Group Insurance – Self-Insurance	21,475.34	8,453.19	16,276.92	46,205.45
Total Personnel Services – Employee Benefits	\$69,052.08	\$48,933.08	\$33,031.64	\$151,016.80
300 <u>Purchased Professional and Technical Services</u>				
329 Professional Educational Services – Other	112,358.72	35,852.99		148,211.71
Total Purchased Professional and Technical Services	\$112,358.72	\$35,852.99		\$148,211.71
500 <u>Other Purchased Services</u>				
530 Communications	36.81	18.46		55.27
550 Printing and Binding	193.63	193.62		387.25
580 Travel	3,645.59	3,527.87		7,173.46
Total Other Purchased Services	\$3,876.03	\$3,739.95		\$7,615.98
600 <u>Supplies</u>				
610 General Supplies	7,070.71	1,187.32		8,258.03
650 Supplies & Fees – Technology Related	502.95			502.95
Total Supplies	\$7,573.66	\$1,187.32		\$8,760.98
Total 1270 Multi-Handicapped Support	\$306,814.49	\$158,699.34	\$101,984.64	\$567,498.47

LEA : 113362303 Eastern Lancaster County SD

Printed 11/19/2019 11:26:07 AM

General Fund (10)

1280 Early Intervention Support

300 Purchased Professional and Technical Services

322 Professional Educational Services – lus	Elementary	Secondary	Federal	Total
	66,313.66		3,043.00	69,356.66
Total Purchased Professional and Technical Services	\$66,313.66		\$3,043.00	\$69,356.66
Total 1280 Early Intervention Support	\$66,313.66		\$3,043.00	\$69,356.66

LEA : 113362303 Eastern Lancaster County SD

Printed 11/19/2019 11:26:07 AM

General Fund (10)

1290 Special Programs - Other Support	<u>Elementary</u>	<u>Secondary</u>	<u>Federal</u>	<u>Total</u>
300 <u>Purchased Professional and Technical Services</u>				
329 Professional Educational Services – Other			149,030.00	149,030.00
Total Purchased Professional and Technical Services			\$149,030.00	\$149,030.00
500 <u>Other Purchased Services</u>				
594 IU Payment By Withholding for Institutionalized Children's Programs – Special Classes		658.86		658.86
Total Other Purchased Services		\$658.86		\$658.86
Total 1290 Special Programs - Other Support		\$658.86	\$149,030.00	\$149,688.86

LEA : 113362303 Eastern Lancaster County SD

Printed 11/19/2019 11:26:07 AM

General Fund (10)				
1300 Vocational Education	<u>Elementary</u>	<u>Secondary</u>	<u>Federal</u>	<u>Total</u>
100 <u>Personnel Services – Salaries</u>				
100 Personnel Services – Salaries		57,423.98		57,423.98
Total Personnel Services – Salaries		\$57,423.98		\$57,423.98
200 <u>Personnel Services – Employee Benefits</u>				
210 Group Insurance – Contracted Provider		197.00		197.00
220 Social Security Contributions		4,307.91		4,307.91
230 PSERS Retirement Contributions		19,029.63		19,029.63
260 Workers' Compensation		386.08		386.08
270 Group Insurance – Self-Insurance		8,128.95		8,128.95
Total Personnel Services – Employee Benefits		\$32,049.57		\$32,049.57
300 <u>Purchased Professional and Technical Services</u>				
329 Professional Educational Services – Other		9,450.43		9,450.43
330 Other Professional Services		166.56		166.56
Total Purchased Professional and Technical Services		\$9,616.99		\$9,616.99
500 <u>Other Purchased Services</u>				
510 Student Transportation Services		5,530.56		5,530.56
530 Communications		234.38		234.38
550 Printing and Binding		75.00		75.00
564 Tuition To Career and Technology Centers		1,158,591.28		1,158,591.28
580 Travel		316.15		316.15
Total Other Purchased Services		\$1,164,747.37		\$1,164,747.37
600 <u>Supplies</u>				
610 General Supplies		12,582.81		12,582.81
620 Energy		61.32		61.32
630 Food		129.03		129.03
640 Books and Periodicals		323.20		323.20
650 Supplies & Fees – Technology Related		325.00		325.00
Total Supplies		\$13,421.36		\$13,421.36
800 <u>Other Objects</u>				
810 Dues and Fees		2,515.75		2,515.75
Total Other Objects		\$2,515.75		\$2,515.75
Total 1300 Vocational Education		\$1,279,775.02		\$1,279,775.02

LEA : 113362303 Eastern Lancaster County SD

Printed 11/19/2019 11:26:07 AM

General Fund (10)				
1400 Other Instructional Programs – Elementary / Secondary	<u>Elementary</u>	<u>Secondary</u>	<u>Federal</u>	<u>Total</u>
100 <u>Personnel Services – Salaries</u>				
100 Personnel Services – Salaries	12,102.75	96,433.02		108,535.77
Total Personnel Services – Salaries	\$12,102.75	\$96,433.02		\$108,535.77
200 <u>Personnel Services – Employee Benefits</u>				
210 Group Insurance – Contracted Provider		208.00		208.00
220 Social Security Contributions	923.67	7,245.30		8,168.97
230 PSERS Retirement Contributions	4,045.95	32,237.67		36,283.62
260 Workers' Compensation	81.20	648.17		729.37
270 Group Insurance – Self-Insurance		9,964.69		9,964.69
Total Personnel Services – Employee Benefits	\$5,050.82	\$50,303.83		\$55,354.65
300 <u>Purchased Professional and Technical Services</u>				
322 Professional Educational Services – Ius		781.13		781.13
329 Professional Educational Services – Other	3,228.00	36,470.47		39,698.47
Total Purchased Professional and Technical Services	\$3,228.00	\$37,251.60		\$40,479.60
500 <u>Other Purchased Services</u>				
580 Travel	161.95			161.95
Total Other Purchased Services	\$161.95			\$161.95
600 <u>Supplies</u>				
610 General Supplies		877.51		877.51
Total Supplies		\$877.51		\$877.51
Total 1400 Other Instructional Programs – Elementary / Secondary	\$20,543.52	\$184,865.96		\$205,409.48

LEA : 113362303 Eastern Lancaster County SD

Printed 11/19/2019 11:26:07 AM

General Fund (10)

1410 Drivers' Education

	<u>Elementary</u>	<u>Secondary</u>	<u>Federal</u>	<u>Total</u>
100 <u>Personnel Services – Salaries</u>				
100 Personnel Services – Salaries		2,508.25		2,508.25
Total Personnel Services – Salaries		\$2,508.25		\$2,508.25
200 <u>Personnel Services – Employee Benefits</u>				
220 Social Security Contributions		187.25		187.25
230 PSERS Retirement Contributions		838.51		838.51
260 Workers' Compensation		17.06		17.06
Total Personnel Services – Employee Benefits		\$1,042.82		\$1,042.82
Total 1410 Drivers' Education		\$3,551.07		\$3,551.07

LEA : 113362303 Eastern Lancaster County SD

Printed 11/19/2019 11:26:07 AM

General Fund (10)

1420 Summer School	<u>Elementary</u>	<u>Secondary</u>	<u>Federal</u>	<u>Total</u>
100 <u>Personnel Services – Salaries</u>				
100 Personnel Services – Salaries	11,244.75	14,204.52		25,449.27
Total Personnel Services – Salaries	\$11,244.75	\$14,204.52		\$25,449.27
200 <u>Personnel Services – Employee Benefits</u>				
220 Social Security Contributions	858.86	1,067.22		1,926.08
230 PSERS Retirement Contributions	3,759.12	4,748.57		8,507.69
260 Workers’ Compensation	75.37	95.22		170.59
Total Personnel Services – Employee Benefits	\$4,693.35	\$5,911.01		\$10,604.36
500 <u>Other Purchased Services</u>				
580 Travel	47.72			47.72
Total Other Purchased Services	\$47.72			\$47.72
Total 1420 Summer School	\$15,985.82	\$20,115.53		\$36,101.35

LEA : 113362303 Eastern Lancaster County SD

Printed 11/19/2019 11:26:07 AM

General Fund (10)

1430 Homebound Instruction	<u>Elementary</u>	<u>Secondary</u>	<u>Federal</u>	<u>Total</u>
100 <u>Personnel Services – Salaries</u>				
100 Personnel Services – Salaries	858.00	668.25		1,526.25
Total Personnel Services – Salaries	\$858.00	\$668.25		\$1,526.25
200 <u>Personnel Services – Employee Benefits</u>				
220 Social Security Contributions	64.81	49.67		114.48
230 PSERS Retirement Contributions	286.83	223.40		510.23
260 Workers’ Compensation	5.83	4.52		10.35
Total Personnel Services – Employee Benefits	\$357.47	\$277.59		\$635.06
300 <u>Purchased Professional and Technical Services</u>				
322 Professional Educational Services – Ius		781.13		781.13
329 Professional Educational Services – Other	3,228.00	17,567.95		20,795.95
Total Purchased Professional and Technical Services	\$3,228.00	\$18,349.08		\$21,577.08
500 <u>Other Purchased Services</u>				
580 Travel	114.23			114.23
Total Other Purchased Services	\$114.23			\$114.23
Total 1430 Homebound Instruction	\$4,557.70	\$19,294.92		\$23,852.62

General Fund (10)

1440 Alternative Regular Education Programs	<u>Elementary</u>	<u>Secondary</u>	<u>Federal</u>	<u>Total</u>
100 <u>Personnel Services – Salaries</u>				
100 Personnel Services – Salaries		79,052.00		79,052.00
Total Personnel Services – Salaries		\$79,052.00		\$79,052.00
200 <u>Personnel Services – Employee Benefits</u>				
210 Group Insurance – Contracted Provider		208.00		208.00
220 Social Security Contributions		5,941.16		5,941.16
230 PSERS Retirement Contributions		26,427.19		26,427.19
260 Workers' Compensation		531.37		531.37
270 Group Insurance – Self-Insurance		9,964.69		9,964.69
Total Personnel Services – Employee Benefits		\$43,072.41		\$43,072.41
300 <u>Purchased Professional and Technical Services</u>				
329 Professional Educational Services – Other		18,902.52		18,902.52
Total Purchased Professional and Technical Services		\$18,902.52		\$18,902.52
600 <u>Supplies</u>				
610 General Supplies		877.51		877.51
Total Supplies		\$877.51		\$877.51
Total 1440 Alternative Regular Education Programs		\$141,904.44		\$141,904.44

General Fund (10)

1442 Alternative Education Programs	<u>Elementary</u>	<u>Secondary</u>	<u>Federal</u>	<u>Total</u>
100 <u>Personnel Services – Salaries</u>				
100 Personnel Services – Salaries		79,052.00		79,052.00
Total Personnel Services – Salaries		\$79,052.00		\$79,052.00
200 <u>Personnel Services – Employee Benefits</u>				
210 Group Insurance – Contracted Provider		208.00		208.00
220 Social Security Contributions		5,941.16		5,941.16
230 PSERS Retirement Contributions		26,427.19		26,427.19
260 Workers' Compensation		531.37		531.37
270 Group Insurance – Self-Insurance		9,964.69		9,964.69
Total Personnel Services – Employee Benefits		\$43,072.41		\$43,072.41
300 <u>Purchased Professional and Technical Services</u>				
329 Professional Educational Services – Other		18,902.52		18,902.52
Total Purchased Professional and Technical Services		\$18,902.52		\$18,902.52
600 <u>Supplies</u>				
610 General Supplies		877.51		877.51
Total Supplies		\$877.51		\$877.51
Total 1442 Alternative Education Programs		\$141,904.44		\$141,904.44

LEA : 113362303 Eastern Lancaster County SD

Printed 11/19/2019 11:26:07 AM

General Fund (10)

1500 Nonpublic School Programs

	<u>Elementary</u>	<u>Secondary</u>	<u>Federal</u>	<u>Total</u>
300 <u>Purchased Professional and Technical Services</u>				
322 Professional Educational Services – Ius			19,097.50	19,097.50
330 Other Professional Services			2,088.00	2,088.00
360 Employee Training and Development Services			624.00	624.00
Total Purchased Professional and Technical Services			\$21,809.50	\$21,809.50
600 <u>Supplies</u>				
610 General Supplies			1,101.44	1,101.44
640 Books and Periodicals			1,485.00	1,485.00
650 Supplies & Fees – Technology Related			7,551.92	7,551.92
Total Supplies			\$10,138.36	\$10,138.36
Total 1500 Nonpublic School Programs			\$31,947.86	\$31,947.86

LEA : 113362303 Eastern Lancaster County SD

Printed 11/19/2019 11:26:13 AM

General Fund (10)

2000 Support Services

Total

100	<u>Personnel Services – Salaries</u>	
100	Personnel Services – Salaries	6,764,574.90
Total Personnel Services – Salaries		\$6,764,574.90
200	<u>Personnel Services – Employee Benefits</u>	
210	Group Insurance – Contracted Provider	28,410.24
220	Social Security Contributions	492,827.16
230	PSERS Retirement Contributions	2,214,436.17
240	Tuition Reimbursement	363,770.63
260	Workers' Compensation	45,804.57
270	Group Insurance – Self-Insurance	1,065,493.86
291	Other Retirement Plans	56,329.45
Total Personnel Services – Employee Benefits		\$4,267,072.08
300	<u>Purchased Professional and Technical Services</u>	
322	Professional Educational Services – Ius	158,097.59
329	Professional Educational Services – Other	134,475.10
330	Other Professional Services	694,603.07
340	Technical Services	68,734.00
350	Security / Safety Services	21,644.28
360	Employee Training and Development Services	86,837.71
390	Other Purchased Professional and Technical Services	319,328.66
Total Purchased Professional and Technical Services		\$1,483,720.41
400	<u>Purchased Property Services</u>	
410	Cleaning Services	792,976.09
420	Utility Services	61,162.20
430	Repairs and Maintenance Services	686,999.19
440	Rentals	19,422.89
460	Extermination Services	5,191.60
Total Purchased Property Services		\$1,565,751.97
500	<u>Other Purchased Services</u>	
510	Student Transportation Services	884.44
513	Contracted Carriers	2,598,621.71
516	Student Transportation Services From the IU	25,446.77
520	Insurance – General	469.00
523	General Property and Liability Insurance	152,209.00
530	Communications	154,563.61
549	Other Advertising/Public Relations	5,618.66
550	Printing and Binding	32,038.83
580	Travel	49,548.82
595	IU Payments By Withholding	36,178.59
Total Other Purchased Services		\$3,055,579.43
600	<u>Supplies</u>	
610	General Supplies	796,430.40
620	Energy	885,231.26
630	Food	35,431.47

LEA : 113362303 Eastern Lancaster County SD

Printed 11/19/2019 11:26:13 AM

General Fund (10)

2000 Support Services

Total

600 <u>Supplies</u>	
640 Books and Periodicals	52,339.85
650 Supplies & Fees – Technology Related	783,763.65
Total Supplies	\$2,553,196.63
700 <u>Property</u>	
752 Capital Equipment – Original and Additional	70,362.43
756 Capitalized Technology Equipment – Original	22,127.80
762 Capitalized Equipment - Replacement	269,067.41
Total Property	\$361,557.64
800 <u>Other Objects</u>	
810 Dues and Fees	79,050.69
Total Other Objects	\$79,050.69
Total 2000 Support Services	\$20,130,503.75

LEA : 113362303 Eastern Lancaster County SD

Printed 11/19/2019 11:26:13 AM

General Fund (10)				
2100 Support Services – Students	<u>Elementary</u>	<u>Secondary</u>	<u>Federal</u>	<u>Total</u>
100 <u>Personnel Services – Salaries</u>				
100 Personnel Services – Salaries	438,451.11	480,252.26		1,050,513.86
Total Personnel Services – Salaries	\$438,451.11	\$480,252.26		\$1,050,513.86
200 <u>Personnel Services – Employee Benefits</u>				
210 Group Insurance – Contracted Provider	1,085.25	1,484.68		3,058.18
220 Social Security Contributions	33,033.58	36,157.52		78,917.33
230 PSERS Retirement Contributions	146,239.71	159,601.39		349,905.45
260 Workers' Compensation	2,950.44	3,237.30		7,077.40
270 Group Insurance – Self-Insurance	40,650.53	58,498.54		141,246.39
291 Other Retirement Plans		19,200.00		19,200.00
Total Personnel Services – Employee Benefits	\$223,959.51	\$278,179.43		\$599,404.75
300 <u>Purchased Professional and Technical Services</u>				
322 Professional Educational Services – Ius	1,076.63	4,750.48	138,549.00	144,376.11
329 Professional Educational Services – Other		65,545.08		65,545.08
330 Other Professional Services	39,743.39	23,971.55		102,272.94
Total Purchased Professional and Technical Services	\$40,820.02	\$94,267.11	\$138,549.00	\$312,194.13
400 <u>Purchased Property Services</u>				
440 Rentals		102.00		102.00
Total Purchased Property Services		\$102.00		\$102.00
500 <u>Other Purchased Services</u>				
510 Student Transportation Services		884.44		884.44
530 Communications	652.36	6,450.18		7,854.15
550 Printing and Binding		189.00		189.00
580 Travel	441.42			468.67
Total Other Purchased Services	\$1,093.78	\$7,523.62		\$9,396.26
600 <u>Supplies</u>				
610 General Supplies	4,348.64	7,977.47		12,342.09
630 Food		311.50		311.50
640 Books and Periodicals	431.12	16,771.08		17,202.20
650 Supplies & Fees – Technology Related	19,560.14	21,465.80		41,025.94
Total Supplies	\$24,339.90	\$46,525.85		\$70,881.73
800 <u>Other Objects</u>				
810 Dues and Fees	1,427.00	1,355.00		2,866.00
Total Other Objects	\$1,427.00	\$1,355.00		\$2,866.00
Total 2100 Support Services – Students	\$730,091.32	\$908,205.27	\$138,549.00	\$2,045,358.73

LEA : 113362303 Eastern Lancaster County SD

Printed 11/19/2019 11:26:13 AM

General Fund (10)

2120 Guidance Services	Elementary	Secondary	Federal	Total
100 <u>Personnel Services – Salaries</u>				
100 Personnel Services – Salaries	204,488.94	384,272.80		588,761.74
Total Personnel Services – Salaries	\$204,488.94	\$384,272.80		\$588,761.74
200 <u>Personnel Services – Employee Benefits</u>				
210 Group Insurance – Contracted Provider	548.25	1,333.68		1,881.93
220 Social Security Contributions	15,256.78	28,889.59		44,146.37
230 PSERS Retirement Contributions	68,360.63	128,183.80		196,544.43
260 Workers' Compensation	1,375.11	2,591.22		3,966.33
270 Group Insurance – Self-Insurance	27,692.32	53,232.14		80,924.46
291 Other Retirement Plans		19,200.00		19,200.00
Total Personnel Services – Employee Benefits	\$113,233.09	\$233,430.43		\$346,663.52
300 <u>Purchased Professional and Technical Services</u>				
322 Professional Educational Services – Ius		2,284.08	138,549.00	140,833.08
329 Professional Educational Services – Other		65,545.08		65,545.08
330 Other Professional Services	17,028.20	19,971.55		36,999.75
Total Purchased Professional and Technical Services	\$17,028.20	\$87,800.71	\$138,549.00	\$243,377.91
400 <u>Purchased Property Services</u>				
440 Rentals		102.00		102.00
Total Purchased Property Services		\$102.00		\$102.00
500 <u>Other Purchased Services</u>				
510 Student Transportation Services		884.44		884.44
530 Communications	19.91	6,131.62		6,151.53
550 Printing and Binding		189.00		189.00
Total Other Purchased Services	\$19.91	\$7,205.06		\$7,224.97
600 <u>Supplies</u>				
610 General Supplies	109.82	6,864.48		6,974.30
640 Books and Periodicals	98.01	16,607.00		16,705.01
650 Supplies & Fees – Technology Related	17,032.89	21,024.80		38,057.69
Total Supplies	\$17,240.72	\$44,496.28		\$61,737.00
800 <u>Other Objects</u>				
810 Dues and Fees	338.00	956.00		1,294.00
Total Other Objects	\$338.00	\$956.00		\$1,294.00
Total 2120 Guidance Services	\$352,348.86	\$758,263.28	\$138,549.00	\$1,249,161.14

General Fund (10)

2130 Attendance Services

	<u>Elementary</u>	<u>Secondary</u>	<u>Federal</u>	<u>Total</u>
100 <u>Personnel Services – Salaries</u>				
100 Personnel Services – Salaries				33,479.09
Total Personnel Services – Salaries				\$33,479.09
200 <u>Personnel Services – Employee Benefits</u>				
210 Group Insurance – Contracted Provider				326.41
220 Social Security Contributions				2,411.98
230 PSERS Retirement Contributions				11,192.07
260 Workers' Compensation				227.47
270 Group Insurance – Self-Insurance				19,066.35
Total Personnel Services – Employee Benefits				\$33,224.28
Total 2130 Attendance Services				\$66,703.37

LEA : 113362303 Eastern Lancaster County SD

Printed 11/19/2019 11:26:13 AM

General Fund (10)

2140 Psychological Services	Elementary	Secondary	Federal	Total
100 <u>Personnel Services – Salaries</u>				
100 Personnel Services – Salaries	233,962.17	88,958.71		322,920.88
Total Personnel Services – Salaries	\$233,962.17	\$88,958.71		\$322,920.88
200 <u>Personnel Services – Employee Benefits</u>				
210 Group Insurance – Contracted Provider	537.00	151.00		688.00
220 Social Security Contributions	17,776.80	6,745.42		24,522.22
230 PSERS Retirement Contributions	77,879.08	29,070.39		106,949.47
260 Workers' Compensation	1,575.33	598.22		2,173.55
270 Group Insurance – Self-Insurance	12,958.21	5,266.40		18,224.61
Total Personnel Services – Employee Benefits	\$110,726.42	\$41,831.43		\$152,557.85
300 <u>Purchased Professional and Technical Services</u>				
322 Professional Educational Services – lus	1,076.63	2,466.40		3,543.03
330 Other Professional Services	22,715.19	4,000.00		26,715.19
Total Purchased Professional and Technical Services	\$23,791.82	\$6,466.40		\$30,258.22
500 <u>Other Purchased Services</u>				
530 Communications	632.45	318.56		951.01
580 Travel	441.42			441.42
Total Other Purchased Services	\$1,073.87	\$318.56		\$1,392.43
600 <u>Supplies</u>				
610 General Supplies	4,238.82	1,112.99		5,351.81
640 Books and Periodicals	333.11	164.08		497.19
650 Supplies & Fees – Technology Related	2,527.25	441.00		2,968.25
Total Supplies	\$7,099.18	\$1,718.07		\$8,817.25
800 <u>Other Objects</u>				
810 Dues and Fees	1,089.00	399.00		1,488.00
Total Other Objects	\$1,089.00	\$399.00		\$1,488.00
Total 2140 Psychological Services	\$377,742.46	\$139,692.17		\$517,434.63

LEA : 113362303 Eastern Lancaster County SD

Printed 11/19/2019 11:26:13 AM

General Fund (10)

2160 Social Work Services

	<u>Elementary</u>	<u>Secondary</u>	<u>Federal</u>	<u>Total</u>
100 <u>Personnel Services – Salaries</u>				
100 Personnel Services – Salaries				69,619.94
Total Personnel Services – Salaries				\$69,619.94
200 <u>Personnel Services – Employee Benefits</u>				
210 Group Insurance – Contracted Provider				143.00
220 Social Security Contributions				5,118.59
230 PSERS Retirement Contributions				23,274.03
260 Workers' Compensation				467.73
270 Group Insurance – Self-Insurance				19,066.35
Total Personnel Services – Employee Benefits				\$48,069.70
300 <u>Purchased Professional and Technical Services</u>				
330 Other Professional Services				38,558.00
Total Purchased Professional and Technical Services				\$38,558.00
500 <u>Other Purchased Services</u>				
530 Communications				27.98
Total Other Purchased Services				\$27.98
600 <u>Supplies</u>				
610 General Supplies				15.98
Total Supplies				\$15.98
Total 2160 Social Work Services				\$156,291.60

LEA : 113362303 Eastern Lancaster County SD

Printed 11/19/2019 11:26:13 AM

General Fund (10)

2170 Student Accounting Services

	<u>Elementary</u>	<u>Secondary</u>	<u>Federal</u>	<u>Total</u>
100 <u>Personnel Services – Salaries</u>				
100 Personnel Services – Salaries				28,711.46
Total Personnel Services – Salaries				\$28,711.46
200 <u>Personnel Services – Employee Benefits</u>				
210 Group Insurance – Contracted Provider				18.84
220 Social Security Contributions				2,195.66
230 PSERS Retirement Contributions				9,598.25
260 Workers' Compensation				194.46
270 Group Insurance – Self-Insurance				3,964.62
Total Personnel Services – Employee Benefits				\$15,971.83
500 <u>Other Purchased Services</u>				
530 Communications				723.63
580 Travel				27.25
Total Other Purchased Services				\$750.88
800 <u>Other Objects</u>				
810 Dues and Fees				84.00
Total Other Objects				\$84.00
Total 2170 Student Accounting Services				\$45,518.17

General Fund (10)

2190 Other Student Services

	<u>Elementary</u>	<u>Secondary</u>	<u>Federal</u>	<u>Total</u>
100 <u>Personnel Services – Salaries</u>				
100 Personnel Services – Salaries		7,020.75		7,020.75
Total Personnel Services – Salaries		\$7,020.75		\$7,020.75
200 <u>Personnel Services – Employee Benefits</u>				
220 Social Security Contributions		522.51		522.51
230 PSERS Retirement Contributions		2,347.20		2,347.20
260 Workers’ Compensation		47.86		47.86
Total Personnel Services – Employee Benefits		\$2,917.57		\$2,917.57
600 <u>Supplies</u>				
630 Food		311.50		311.50
Total Supplies		\$311.50		\$311.50
Total 2190 Other Student Services		\$10,249.82		\$10,249.82

LEA : 113362303 Eastern Lancaster County SD

Printed 11/19/2019 11:26:13 AM

General Fund (10)

2200 Support Services – Instructional Staff	Elementary	Secondary	Federal	Total
100 <u>Personnel Services – Salaries</u>				
100 Personnel Services – Salaries	804,047.61	724,644.47		1,528,692.08
Total Personnel Services – Salaries	\$804,047.61	\$724,644.47		\$1,528,692.08
200 <u>Personnel Services – Employee Benefits</u>				
210 Group Insurance – Contracted Provider	3,491.57	3,074.62		6,566.19
220 Social Security Contributions	60,058.07	54,207.06		114,265.13
230 PSERS Retirement Contributions	267,721.14	241,047.21		508,768.35
240 Tuition Reimbursement	159,423.40	146,306.00		305,729.40
260 Workers' Compensation	5,437.61	4,902.07		10,339.68
270 Group Insurance – Self-Insurance	123,154.44	105,496.80		228,651.24
291 Other Retirement Plans	2,523.30	3,560.45		6,083.75
Total Personnel Services – Employee Benefits	\$621,809.53	\$558,594.21		\$1,180,403.74
300 <u>Purchased Professional and Technical Services</u>				
322 Professional Educational Services – Ius	6,633.00	3,242.00		9,875.00
329 Professional Educational Services – Other	11,336.08	29,111.94		40,448.02
330 Other Professional Services	3,287.48	6,784.59		10,072.07
360 Employee Training and Development Services	10,455.88	10,958.03	1,512.00	22,925.91
390 Other Purchased Professional and Technical Services	5,760.00	1,440.00		7,200.00
Total Purchased Professional and Technical Services	\$37,472.44	\$51,536.56	\$1,512.00	\$90,521.00
400 <u>Purchased Property Services</u>				
430 Repairs and Maintenance Services		1,868.98		1,868.98
Total Purchased Property Services		\$1,868.98		\$1,868.98
500 <u>Other Purchased Services</u>				
530 Communications	1,539.48	1,372.47		2,911.95
550 Printing and Binding		35.00		35.00
580 Travel	5,453.96	7,510.67		12,964.63
Total Other Purchased Services	\$6,993.44	\$8,918.14		\$15,911.58
600 <u>Supplies</u>				
610 General Supplies	2,389.62	9,246.19		11,635.81
630 Food	1,496.19	1,129.93		2,626.12
640 Books and Periodicals	22,073.59	8,503.39		30,576.98
650 Supplies & Fees – Technology Related	10,162.50	25,036.98		35,199.48
Total Supplies	\$36,121.90	\$43,916.49		\$80,038.39
800 <u>Other Objects</u>				
810 Dues and Fees	5,387.62	3,925.89		9,313.51
Total Other Objects	\$5,387.62	\$3,925.89		\$9,313.51
Total 2200 Support Services – Instructional Staff	\$1,511,832.54	\$1,393,404.74	\$1,512.00	\$2,906,749.28

General Fund (10)

2230 Educational Television Services	<u>Elementary</u>	<u>Secondary</u>	<u>Federal</u>	<u>Total</u>
100 <u>Personnel Services – Salaries</u>				
100 Personnel Services – Salaries		2,969.98		2,969.98
Total Personnel Services – Salaries		\$2,969.98		\$2,969.98
200 <u>Personnel Services – Employee Benefits</u>				
220 Social Security Contributions		218.72		218.72
230 PSERS Retirement Contributions		992.93		992.93
260 Workers’ Compensation		20.03		20.03
Total Personnel Services – Employee Benefits		\$1,231.68		\$1,231.68
600 <u>Supplies</u>				
610 General Supplies		5,575.35		5,575.35
Total Supplies		\$5,575.35		\$5,575.35
Total 2230 Educational Television Services		\$9,777.01		\$9,777.01

LEA : 113362303 Eastern Lancaster County SD

Printed 11/19/2019 11:26:13 AM

General Fund (10)				
2250 School Library Services	<u>Elementary</u>	<u>Secondary</u>	<u>Federal</u>	<u>Total</u>
100 <u>Personnel Services – Salaries</u>				
100 Personnel Services – Salaries	242,618.98	10,399.12		253,018.10
Total Personnel Services – Salaries	\$242,618.98	\$10,399.12		\$253,018.10
200 <u>Personnel Services – Employee Benefits</u>				
210 Group Insurance – Contracted Provider	757.56	136.00		893.56
220 Social Security Contributions	18,185.49	772.77		18,958.26
230 PSERS Retirement Contributions	80,572.46	3,476.43		84,048.89
260 Workers' Compensation	1,635.64	69.90		1,705.54
270 Group Insurance – Self-Insurance	31,431.14	1,625.84		33,056.98
Total Personnel Services – Employee Benefits	\$132,582.29	\$6,080.94		\$138,663.23
300 <u>Purchased Professional and Technical Services</u>				
329 Professional Educational Services – Other		14,048.18		14,048.18
Total Purchased Professional and Technical Services		\$14,048.18		\$14,048.18
400 <u>Purchased Property Services</u>				
430 Repairs and Maintenance Services		1,868.98		1,868.98
Total Purchased Property Services		\$1,868.98		\$1,868.98
500 <u>Other Purchased Services</u>				
530 Communications	65.91	12.25		78.16
Total Other Purchased Services	\$65.91	\$12.25		\$78.16
600 <u>Supplies</u>				
610 General Supplies	663.06	2,328.62		2,991.68
640 Books and Periodicals	13,985.60	2,731.33		16,716.93
650 Supplies & Fees – Technology Related	5,430.64	20,158.34		25,588.98
Total Supplies	\$20,079.30	\$25,218.29		\$45,297.59
800 <u>Other Objects</u>				
810 Dues and Fees	60.00			60.00
Total Other Objects	\$60.00			\$60.00
Total 2250 School Library Services	\$395,406.48	\$57,627.76		\$453,034.24

LEA : 113362303 Eastern Lancaster County SD

Printed 11/19/2019 11:26:13 AM

General Fund (10)

2260 Instruction and Curriculum Development Services	Elementary	Secondary	Federal	Total
100 <u>Personnel Services – Salaries</u>				
100 Personnel Services – Salaries	533,791.12	691,522.63		1,225,313.75
Total Personnel Services – Salaries	\$533,791.12	\$691,522.63		\$1,225,313.75
200 <u>Personnel Services – Employee Benefits</u>				
210 Group Insurance – Contracted Provider	2,734.01	2,938.62		5,672.63
220 Social Security Contributions	39,772.29	51,731.00		91,503.29
230 PSERS Retirement Contributions	178,053.01	229,974.56		408,027.57
260 Workers' Compensation	3,614.09	4,677.96		8,292.05
270 Group Insurance – Self-Insurance	91,723.30	103,870.96		195,594.26
291 Other Retirement Plans	2,523.30	3,560.45		6,083.75
Total Personnel Services – Employee Benefits	\$318,420.00	\$396,753.55		\$715,173.55
300 <u>Purchased Professional and Technical Services</u>				
322 Professional Educational Services – Ius	3,042.00	2,808.00		5,850.00
330 Other Professional Services	219.48	202.59		422.07
390 Other Purchased Professional and Technical Services	5,760.00	1,440.00		7,200.00
Total Purchased Professional and Technical Services	\$9,021.48	\$4,450.59		\$13,472.07
500 <u>Other Purchased Services</u>				
530 Communications	1,473.57	1,360.22		2,833.79
550 Printing and Binding		35.00		35.00
580 Travel	2,338.60	2,223.52		4,562.12
Total Other Purchased Services	\$3,812.17	\$3,618.74		\$7,430.91
600 <u>Supplies</u>				
610 General Supplies	1,503.70	1,184.49		2,688.19
630 Food	120.11	141.84		261.95
640 Books and Periodicals	502.64	365.90		868.54
650 Supplies & Fees – Technology Related	123.99	568.99		692.98
Total Supplies	\$2,250.44	\$2,261.22		\$4,511.66
800 <u>Other Objects</u>				
810 Dues and Fees	197.60	222.40		420.00
Total Other Objects	\$197.60	\$222.40		\$420.00
Total 2260 Instruction and Curriculum Development Services	\$867,492.81	\$1,098,829.13		\$1,966,321.94

LEA : 113362303 Eastern Lancaster County SD

Printed 11/19/2019 11:26:13 AM

General Fund (10)

2270 Instructional Staff Professional Development Services	Elementary	Secondary	Federal	Total
100 Personnel Services – Salaries				
100 Personnel Services – Salaries	27,637.51	19,752.74		47,390.25
Total Personnel Services – Salaries	\$27,637.51	\$19,752.74		\$47,390.25
200 Personnel Services – Employee Benefits				
220 Social Security Contributions	2,100.29	1,484.57		3,584.86
230 PSERS Retirement Contributions	9,095.67	6,603.29		15,698.96
240 Tuition Reimbursement	159,423.40	146,306.00		305,729.40
260 Workers' Compensation	187.88	134.18		322.06
Total Personnel Services – Employee Benefits	\$170,807.24	\$154,528.04		\$325,335.28
300 Purchased Professional and Technical Services				
322 Professional Educational Services – lus	3,591.00	434.00		4,025.00
329 Professional Educational Services – Other	11,336.08	15,063.76		26,399.84
330 Other Professional Services	3,068.00	6,582.00		9,650.00
360 Employee Training and Development Services	10,455.88	10,958.03	1,512.00	22,925.91
Total Purchased Professional and Technical Services	\$28,450.96	\$33,037.79	\$1,512.00	\$63,000.75
500 Other Purchased Services				
580 Travel	3,115.36	5,287.15		8,402.51
Total Other Purchased Services	\$3,115.36	\$5,287.15		\$8,402.51
600 Supplies				
610 General Supplies	222.86	157.73		380.59
630 Food	1,376.08	988.09		2,364.17
640 Books and Periodicals	7,585.35	5,406.16		12,991.51
650 Supplies & Fees – Technology Related	4,607.87	4,309.65		8,917.52
Total Supplies	\$13,792.16	\$10,861.63		\$24,653.79
800 Other Objects				
810 Dues and Fees	5,130.02	3,703.49		8,833.51
Total Other Objects	\$5,130.02	\$3,703.49		\$8,833.51
Total 2270 Instructional Staff Professional Development Services	\$248,933.25	\$227,170.84	\$1,512.00	\$477,616.09

LEA : 113362303 Eastern Lancaster County SD

Printed 11/19/2019 11:26:13 AM

General Fund (10)

2300 Support Services – Administration	Elementary	Secondary	Federal	Total
100 Personnel Services – Salaries				
100 Personnel Services – Salaries	532,063.34	655,813.74		1,628,483.50
Total Personnel Services – Salaries	\$532,063.34	\$655,813.74		\$1,628,483.50
200 Personnel Services – Employee Benefits				
210 Group Insurance – Contracted Provider	2,534.99	3,388.29		9,051.18
220 Social Security Contributions	40,017.19	48,175.67		115,544.03
230 PSERS Retirement Contributions	173,166.08	216,316.84		533,355.62
260 Workers' Compensation	3,614.02	4,455.57		11,063.40
270 Group Insurance – Self-Insurance	76,565.23	130,900.72		246,247.62
291 Other Retirement Plans	1,323.00	1,140.28		18,063.20
Total Personnel Services – Employee Benefits	\$297,220.51	\$404,377.37		\$933,325.05
300 Purchased Professional and Technical Services				
330 Other Professional Services				165,771.38
390 Other Purchased Professional and Technical Services				1,980.00
Total Purchased Professional and Technical Services				\$167,751.38
400 Purchased Property Services				
410 Cleaning Services	366.00	272.00		638.00
440 Rentals		1,000.00		4,769.75
Total Purchased Property Services	\$366.00	\$1,272.00		\$5,407.75
500 Other Purchased Services				
520 Insurance – General				469.00
530 Communications	275.47	254.28		8,267.81
549 Other Advertising/Public Relations				4,440.92
550 Printing and Binding	3,315.75	3,884.50		20,695.02
580 Travel		81.66		5,521.26
Total Other Purchased Services	\$3,591.22	\$4,220.44		\$39,394.01
600 Supplies				
610 General Supplies	10,018.03	24,528.71		58,910.83
620 Energy				982.50
630 Food	3,352.40	6,842.24		32,165.45
640 Books and Periodicals	475.97	786.95		4,292.24
650 Supplies & Fees – Technology Related		223.76		12,619.06
Total Supplies	\$13,846.40	\$32,381.66		\$108,970.08
800 Other Objects				
810 Dues and Fees	119.00	1,204.00		21,137.25
Total Other Objects	\$119.00	\$1,204.00		\$21,137.25
Total 2300 Support Services – Administration	\$847,206.47	\$1,099,269.21		\$2,904,469.02

LEA : 113362303 Eastern Lancaster County SD

Printed 11/19/2019 11:26:13 AM

General Fund (10)

2310 Board Services

Elementary Secondary Federal Total

300 <u>Purchased Professional and Technical Services</u>				
330 Other Professional Services				899.00
390 Other Purchased Professional and Technical Services				1,980.00
Total Purchased Professional and Technical Services				\$2,879.00
500 <u>Other Purchased Services</u>				
520 Insurance – General				100.00
530 Communications				58.49
549 Other Advertising/Public Relations				4,440.92
Total Other Purchased Services				\$4,599.41
600 <u>Supplies</u>				
650 Supplies & Fees – Technology Related				4,650.00
Total Supplies				\$4,650.00
800 <u>Other Objects</u>				
810 Dues and Fees				12,567.50
Total Other Objects				\$12,567.50
Total 2310 Board Services				\$24,695.91

General Fund (10)

2320 Board Treasurer Services	<u>Elementary</u>	<u>Secondary</u>	<u>Federal</u>	<u>Total</u>
300 <u>Purchased Professional and Technical Services</u>				
330 Other Professional Services				600.00
Total Purchased Professional and Technical Services				\$600.00
500 <u>Other Purchased Services</u>				
520 Insurance – General				100.00
Total Other Purchased Services				\$100.00
Total 2320 Board Treasurer Services				\$700.00

LEA : 113362303 Eastern Lancaster County SD

Printed 11/19/2019 11:26:13 AM

General Fund (10)

2330 Tax Assessment and Collection Services	<u>Elementary</u>	<u>Secondary</u>	<u>Federal</u>	<u>Total</u>
100 <u>Personnel Services – Salaries</u>				
100 Personnel Services – Salaries				2,534.35
Total Personnel Services – Salaries				\$2,534.35
200 <u>Personnel Services – Employee Benefits</u>				
210 Group Insurance – Contracted Provider				98.57
220 Social Security Contributions				168.00
230 PSERS Retirement Contributions				847.24
260 Workers' Compensation				17.23
270 Group Insurance – Self-Insurance				537.31
Total Personnel Services – Employee Benefits				\$1,668.35
300 <u>Purchased Professional and Technical Services</u>				
330 Other Professional Services				67,754.57
Total Purchased Professional and Technical Services				\$67,754.57
500 <u>Other Purchased Services</u>				
520 Insurance – General				269.00
530 Communications				7,679.57
550 Printing and Binding				12,750.80
Total Other Purchased Services				\$20,699.37
600 <u>Supplies</u>				
650 Supplies & Fees – Technology Related				7,442.32
Total Supplies				\$7,442.32
800 <u>Other Objects</u>				
810 Dues and Fees				275.00
Total Other Objects				\$275.00
Total 2330 Tax Assessment and Collection Services				\$100,373.96

LEA : 113362303 Eastern Lancaster County SD

Printed 11/19/2019 11:26:13 AM

General Fund (10)

2340 Staff Relations and Negotiations Services

<u>Elementary</u>	<u>Secondary</u>	<u>Federal</u>	<u>Total</u>
-------------------	------------------	----------------	--------------

300 Purchased Professional and Technical Services

330 Other Professional Services			1,100.00
---------------------------------	--	--	----------

Total Purchased Professional and Technical Services			\$1,100.00
--	--	--	-------------------

Total 2340 Staff Relations and Negotiations Services			\$1,100.00
---	--	--	-------------------

LEA : 113362303 Eastern Lancaster County SD

Printed 11/19/2019 11:26:13 AM

General Fund (10)

2350 Legal and Accounting Services	<u>Elementary</u>	<u>Secondary</u>	<u>Federal</u>	<u>Total</u>
300 <u>Purchased Professional and Technical Services</u>				
330 Other Professional Services				85,084.46
Total Purchased Professional and Technical Services				\$85,084.46
Total 2350 Legal and Accounting Services				\$85,084.46

LEA : 113362303 Eastern Lancaster County SD

Printed 11/19/2019 11:26:13 AM

General Fund (10)				
2360 Office of the Superintendent / Executive Director Services	<u>Elementary</u>	<u>Secondary</u>	<u>Federal</u>	<u>Total</u>
100 <u>Personnel Services – Salaries</u>				
100 Personnel Services – Salaries				438,072.07
Total Personnel Services – Salaries				\$438,072.07
200 <u>Personnel Services – Employee Benefits</u>				
210 Group Insurance – Contracted Provider				3,029.33
220 Social Security Contributions				27,183.17
230 PSERS Retirement Contributions				141,167.97
260 Workers' Compensation				2,976.58
270 Group Insurance – Self-Insurance				38,244.36
291 Other Retirement Plans				15,599.92
Total Personnel Services – Employee Benefits				\$228,201.33
300 <u>Purchased Professional and Technical Services</u>				
330 Other Professional Services				10,333.35
Total Purchased Professional and Technical Services				\$10,333.35
500 <u>Other Purchased Services</u>				
530 Communications	275.47	254.28		529.75
550 Printing and Binding				218.00
580 Travel				5,238.26
Total Other Purchased Services	\$275.47	\$254.28		\$5,986.01
600 <u>Supplies</u>				
610 General Supplies				17,479.96
620 Energy				982.50
630 Food				17,299.81
640 Books and Periodicals				3,029.32
650 Supplies & Fees – Technology Related				302.98
Total Supplies				\$39,094.57
800 <u>Other Objects</u>				
810 Dues and Fees				6,971.75
Total Other Objects				\$6,971.75
Total 2360 Office of the Superintendent / Executive Director Services	\$275.47	\$254.28		\$728,659.08

LEA : 113362303 Eastern Lancaster County SD

Printed 11/19/2019 11:26:13 AM

General Fund (10)

2380 Office of the Principal Services	Elementary	Secondary	Federal	Total
100 Personnel Services – Salaries				
100 Personnel Services – Salaries	532,063.34	655,813.74		1,187,877.08
Total Personnel Services – Salaries	\$532,063.34	\$655,813.74		\$1,187,877.08
200 Personnel Services – Employee Benefits				
210 Group Insurance – Contracted Provider	2,534.99	3,388.29		5,923.28
220 Social Security Contributions	40,017.19	48,175.67		88,192.86
230 PSERS Retirement Contributions	173,166.08	216,316.84		389,482.92
260 Workers' Compensation	3,614.02	4,455.57		8,069.59
270 Group Insurance – Self-Insurance	76,565.23	130,900.72		207,465.95
291 Other Retirement Plans	1,323.00	1,140.28		2,463.28
Total Personnel Services – Employee Benefits	\$297,220.51	\$404,377.37		\$701,597.88
400 Purchased Property Services				
410 Cleaning Services	366.00	272.00		638.00
440 Rentals		1,000.00		1,000.00
Total Purchased Property Services	\$366.00	\$1,272.00		\$1,638.00
500 Other Purchased Services				
550 Printing and Binding	3,315.75	3,884.50		7,200.25
580 Travel		81.66		81.66
Total Other Purchased Services	\$3,315.75	\$3,966.16		\$7,281.91
600 Supplies				
610 General Supplies	10,018.03	24,528.71		34,546.74
630 Food	3,352.40	6,842.24		10,194.64
640 Books and Periodicals	475.97	786.95		1,262.92
650 Supplies & Fees – Technology Related		223.76		223.76
Total Supplies	\$13,846.40	\$32,381.66		\$46,228.06
800 Other Objects				
810 Dues and Fees	119.00	1,204.00		1,323.00
Total Other Objects	\$119.00	\$1,204.00		\$1,323.00
Total 2380 Office of the Principal Services	\$846,931.00	\$1,099,014.93		\$1,945,945.93

General Fund (10)

2390 Other Administration Services	<u>Elementary</u>	<u>Secondary</u>	<u>Federal</u>	<u>Total</u>
200 <u>Personnel Services – Employee Benefits</u>				
230 PSERS Retirement Contributions				1,857.49
Total Personnel Services – Employee Benefits				\$1,857.49
400 <u>Purchased Property Services</u>				
440 Rentals				3,769.75
Total Purchased Property Services				\$3,769.75
500 <u>Other Purchased Services</u>				
550 Printing and Binding				525.97
580 Travel				201.34
Total Other Purchased Services				\$727.31
600 <u>Supplies</u>				
610 General Supplies				6,884.13
630 Food				4,671.00
Total Supplies				\$11,555.13
Total 2390 Other Administration Services				\$17,909.68

LEA : 113362303 Eastern Lancaster County SD

Printed 11/19/2019 11:26:13 AM

General Fund (10)

2400 Support Services – Pupil Health	Elementary	Secondary	Federal	Total
100 <u>Personnel Services – Salaries</u>				
100 Personnel Services – Salaries				486,060.45
Total Personnel Services – Salaries				\$486,060.45
200 <u>Personnel Services – Employee Benefits</u>				
210 Group Insurance – Contracted Provider				1,333.81
220 Social Security Contributions				36,085.56
230 PSERS Retirement Contributions				162,490.10
260 Workers' Compensation				3,282.53
270 Group Insurance – Self-Insurance				79,171.40
Total Personnel Services – Employee Benefits				\$282,363.40
300 <u>Purchased Professional and Technical Services</u>				
322 Professional Educational Services – lus				3,846.48
329 Professional Educational Services – Other				28,482.00
330 Other Professional Services				270,333.65
390 Other Purchased Professional and Technical Services				2,264.88
Total Purchased Professional and Technical Services				\$304,927.01
400 <u>Purchased Property Services</u>				
410 Cleaning Services				122.00
430 Repairs and Maintenance Services				625.00
440 Rentals				208.00
Total Purchased Property Services				\$955.00
500 <u>Other Purchased Services</u>				
530 Communications				1,944.03
550 Printing and Binding				249.00
580 Travel				434.09
Total Other Purchased Services				\$2,627.12
600 <u>Supplies</u>				
610 General Supplies				4,485.05
650 Supplies & Fees – Technology Related				120.95
Total Supplies				\$4,606.00
800 <u>Other Objects</u>				
810 Dues and Fees				510.00
Total Other Objects				\$510.00
Total 2400 Support Services – Pupil Health				\$1,082,048.98

LEA : 113362303 Eastern Lancaster County SD

Printed 11/19/2019 11:26:13 AM

General Fund (10)				
2420 Medical Services	<u>Elementary</u>	<u>Secondary</u>	<u>Federal</u>	<u>Total</u>
100 <u>Personnel Services – Salaries</u>				
100 Personnel Services – Salaries				89,268.86
Total Personnel Services – Salaries				\$89,268.86
200 <u>Personnel Services – Employee Benefits</u>				
210 Group Insurance – Contracted Provider				318.56
220 Social Security Contributions				6,622.89
230 PSERS Retirement Contributions				29,842.58
260 Workers' Compensation				607.07
270 Group Insurance – Self-Insurance				13,166.00
Total Personnel Services – Employee Benefits				\$50,557.10
300 <u>Purchased Professional and Technical Services</u>				
322 Professional Educational Services – lus				3,846.48
330 Other Professional Services				202,745.18
390 Other Purchased Professional and Technical Services				1,765.20
Total Purchased Professional and Technical Services				\$208,356.86
500 <u>Other Purchased Services</u>				
550 Printing and Binding				249.00
580 Travel				258.76
Total Other Purchased Services				\$507.76
600 <u>Supplies</u>				
610 General Supplies				194.95
Total Supplies				\$194.95
Total 2420 Medical Services				\$348,885.53

LEA : 113362303 Eastern Lancaster County SD

Printed 11/19/2019 11:26:13 AM

General Fund (10)

2430 Dental Services

<u>Elementary</u>	<u>Secondary</u>	<u>Federal</u>	<u>Total</u>
-------------------	------------------	----------------	--------------

300 Purchased Professional and Technical Services

330 Other Professional Services			2,380.00
---------------------------------	--	--	----------

Total Purchased Professional and Technical Services			\$2,380.00
--	--	--	-------------------

Total 2430 Dental Services			\$2,380.00
-----------------------------------	--	--	-------------------

LEA : 113362303 Eastern Lancaster County SD

Printed 11/19/2019 11:26:13 AM

General Fund (10)				
2440 Nursing Services	<u>Elementary</u>	<u>Secondary</u>	<u>Federal</u>	<u>Total</u>
100 <u>Personnel Services – Salaries</u>				
100 Personnel Services – Salaries				387,971.11
Total Personnel Services – Salaries				\$387,971.11
200 <u>Personnel Services – Employee Benefits</u>				
210 Group Insurance – Contracted Provider				982.09
220 Social Security Contributions				28,802.53
230 PSERS Retirement Contributions				129,698.72
260 Workers' Compensation				2,616.10
270 Group Insurance – Self-Insurance				63,692.27
Total Personnel Services – Employee Benefits				\$225,791.71
300 <u>Purchased Professional and Technical Services</u>				
329 Professional Educational Services – Other				28,482.00
330 Other Professional Services				65,208.47
390 Other Purchased Professional and Technical Services				499.68
Total Purchased Professional and Technical Services				\$94,190.15
400 <u>Purchased Property Services</u>				
410 Cleaning Services				122.00
430 Repairs and Maintenance Services				625.00
440 Rentals				208.00
Total Purchased Property Services				\$955.00
500 <u>Other Purchased Services</u>				
530 Communications				1,944.03
580 Travel				175.33
Total Other Purchased Services				\$2,119.36
600 <u>Supplies</u>				
610 General Supplies				4,290.10
650 Supplies & Fees – Technology Related				120.95
Total Supplies				\$4,411.05
800 <u>Other Objects</u>				
810 Dues and Fees				510.00
Total Other Objects				\$510.00
Total 2440 Nursing Services				\$715,948.38

General Fund (10)

2450 Nonpublic Health Services	<u>Elementary</u>	<u>Secondary</u>	<u>Federal</u>	<u>Total</u>
100 <u>Personnel Services – Salaries</u>				
100 Personnel Services – Salaries				8,820.48
Total Personnel Services – Salaries				\$8,820.48
200 <u>Personnel Services – Employee Benefits</u>				
210 Group Insurance – Contracted Provider				33.16
220 Social Security Contributions				660.14
230 PSERS Retirement Contributions				2,948.80
260 Workers' Compensation				59.36
270 Group Insurance – Self-Insurance				2,313.13
Total Personnel Services – Employee Benefits				\$6,014.59
Total 2450 Nonpublic Health Services				\$14,835.07

LEA : 113362303 Eastern Lancaster County SD

Printed 11/19/2019 11:26:13 AM

General Fund (10)				
2500 Support Services – Business	<u>Elementary</u>	<u>Secondary</u>	<u>Federal</u>	<u>Total</u>
100 <u>Personnel Services – Salaries</u>				
100 Personnel Services – Salaries				356,393.78
Total Personnel Services – Salaries				\$356,393.78
200 <u>Personnel Services – Employee Benefits</u>				
210 Group Insurance – Contracted Provider				2,001.22
220 Social Security Contributions				21,134.55
230 PSERS Retirement Contributions				117,916.32
260 Workers' Compensation				2,419.70
270 Group Insurance – Self-Insurance				49,905.30
291 Other Retirement Plans				6,200.00
Total Personnel Services – Employee Benefits				\$199,577.09
300 <u>Purchased Professional and Technical Services</u>				
330 Other Professional Services			236.67	706.92
Total Purchased Professional and Technical Services			\$236.67	\$706.92
400 <u>Purchased Property Services</u>				
410 Cleaning Services				882.00
440 Rentals				1,250.47
Total Purchased Property Services				\$2,132.47
500 <u>Other Purchased Services</u>				
530 Communications				1,905.41
580 Travel				956.48
Total Other Purchased Services				\$2,861.89
600 <u>Supplies</u>				
610 General Supplies				6,703.64
640 Books and Periodicals				125.00
650 Supplies & Fees – Technology Related				20,536.64
Total Supplies				\$27,365.28
800 <u>Other Objects</u>				
810 Dues and Fees				34,589.89
Total Other Objects				\$34,589.89
Total 2500 Support Services – Business			\$236.67	\$623,627.32

LEA : 113362303 Eastern Lancaster County SD

Printed 11/19/2019 11:26:13 AM

General Fund (10)

2510 Fiscal Services

	<u>Elementary</u>	<u>Secondary</u>	<u>Federal</u>	<u>Total</u>
100 <u>Personnel Services – Salaries</u>				
100 Personnel Services – Salaries				341,483.29
Total Personnel Services – Salaries				\$341,483.29
200 <u>Personnel Services – Employee Benefits</u>				
210 Group Insurance – Contracted Provider				1,911.23
220 Social Security Contributions				20,045.82
230 PSERS Retirement Contributions				112,931.71
260 Workers' Compensation				2,318.33
270 Group Insurance – Self-Insurance				47,534.36
291 Other Retirement Plans				6,200.00
Total Personnel Services – Employee Benefits				\$190,941.45
300 <u>Purchased Professional and Technical Services</u>				
330 Other Professional Services			236.67	706.92
Total Purchased Professional and Technical Services			\$236.67	\$706.92
400 <u>Purchased Property Services</u>				
410 Cleaning Services				882.00
440 Rentals				1,250.47
Total Purchased Property Services				\$2,132.47
500 <u>Other Purchased Services</u>				
530 Communications				1,905.41
580 Travel				956.48
Total Other Purchased Services				\$2,861.89
600 <u>Supplies</u>				
610 General Supplies				6,703.64
640 Books and Periodicals				125.00
650 Supplies & Fees – Technology Related				20,536.64
Total Supplies				\$27,365.28
800 <u>Other Objects</u>				
810 Dues and Fees				34,589.89
Total Other Objects				\$34,589.89
Total 2510 Fiscal Services			\$236.67	\$600,081.19

LEA : 113362303 Eastern Lancaster County SD

Printed 11/19/2019 11:26:13 AM

General Fund (10)				
2511 Supervision of Fiscal Services - Head of Component	<u>Elementary</u>	<u>Secondary</u>	<u>Federal</u>	<u>Total</u>
100 <u>Personnel Services – Salaries</u>				
100 Personnel Services – Salaries				219,321.07
Total Personnel Services – Salaries				\$219,321.07
200 <u>Personnel Services – Employee Benefits</u>				
210 Group Insurance – Contracted Provider				1,657.77
220 Social Security Contributions				11,284.30
230 PSERS Retirement Contributions				72,092.75
260 Workers' Compensation				1,491.40
270 Group Insurance – Self-Insurance				19,066.35
291 Other Retirement Plans				6,200.00
Total Personnel Services – Employee Benefits				\$111,792.57
300 <u>Purchased Professional and Technical Services</u>				
330 Other Professional Services				470.25
Total Purchased Professional and Technical Services				\$470.25
400 <u>Purchased Property Services</u>				
410 Cleaning Services				882.00
440 Rentals				1,250.47
Total Purchased Property Services				\$2,132.47
500 <u>Other Purchased Services</u>				
530 Communications				1,905.41
580 Travel				928.14
Total Other Purchased Services				\$2,833.55
600 <u>Supplies</u>				
610 General Supplies				4,097.64
640 Books and Periodicals				125.00
650 Supplies & Fees – Technology Related				16,234.64
Total Supplies				\$20,457.28
800 <u>Other Objects</u>				
810 Dues and Fees				5,651.69
Total Other Objects				\$5,651.69
Total 2511 Supervision of Fiscal Services - Head of Component				\$362,658.88

General Fund (10)

2513 Receiving and Disbursing Funds Services	<u>Elementary</u>	<u>Secondary</u>	<u>Federal</u>	<u>Total</u>
100 <u>Personnel Services – Salaries</u>				
100 Personnel Services – Salaries				36,726.72
Total Personnel Services – Salaries				\$36,726.72
200 <u>Personnel Services – Employee Benefits</u>				
210 Group Insurance – Contracted Provider				39.12
220 Social Security Contributions				2,582.26
230 PSERS Retirement Contributions				12,277.79
260 Workers' Compensation				248.67
270 Group Insurance – Self-Insurance				9,857.88
Total Personnel Services – Employee Benefits				\$25,005.72
Total 2513 Receiving and Disbursing Funds Services				\$61,732.44

General Fund (10)

2514 Payroll Services

	<u>Elementary</u>	<u>Secondary</u>	<u>Federal</u>	<u>Total</u>
100 <u>Personnel Services – Salaries</u>				
100 Personnel Services – Salaries				29,184.38
Total Personnel Services – Salaries				\$29,184.38
200 <u>Personnel Services – Employee Benefits</u>				
210 Group Insurance – Contracted Provider				176.78
220 Social Security Contributions				2,141.89
230 PSERS Retirement Contributions				9,756.43
260 Workers' Compensation				197.50
270 Group Insurance – Self-Insurance				10,210.59
Total Personnel Services – Employee Benefits				\$22,483.19
600 <u>Supplies</u>				
650 Supplies & Fees – Technology Related				4,302.00
Total Supplies				\$4,302.00
800 <u>Other Objects</u>				
810 Dues and Fees				27,176.80
Total Other Objects				\$27,176.80
Total 2514 Payroll Services				\$83,146.37

LEA : 113362303 Eastern Lancaster County SD

Printed 11/19/2019 11:26:13 AM

General Fund (10)				
2515 Financial Accounting Services	<u>Elementary</u>	<u>Secondary</u>	<u>Federal</u>	<u>Total</u>
100 <u>Personnel Services – Salaries</u>				
100 Personnel Services – Salaries				56,251.12
Total Personnel Services – Salaries				\$56,251.12
200 <u>Personnel Services – Employee Benefits</u>				
210 Group Insurance – Contracted Provider				37.56
220 Social Security Contributions				4,037.37
230 PSERS Retirement Contributions				18,804.74
260 Workers' Compensation				380.76
270 Group Insurance – Self-Insurance				8,399.54
Total Personnel Services – Employee Benefits				\$31,659.97
300 <u>Purchased Professional and Technical Services</u>				
330 Other Professional Services			236.67	236.67
Total Purchased Professional and Technical Services			\$236.67	\$236.67
500 <u>Other Purchased Services</u>				
580 Travel				28.34
Total Other Purchased Services				\$28.34
600 <u>Supplies</u>				
610 General Supplies				2,606.00
Total Supplies				\$2,606.00
Total 2515 Financial Accounting Services			\$236.67	\$90,782.10

LEA : 113362303 Eastern Lancaster County SD

Printed 11/19/2019 11:26:13 AM

General Fund (10)

2519 Other Fiscal Services

Elementary

Secondary

Federal

Total

800 Other Objects

810 Dues and Fees

1,761.40

Total Other Objects				\$1,761.40
Total 2519 Other Fiscal Services				\$1,761.40

General Fund (10)

2530 Warehousing and Distributing Services	<u>Elementary</u>	<u>Secondary</u>	<u>Federal</u>	<u>Total</u>
100 <u>Personnel Services – Salaries</u>				
100 Personnel Services – Salaries				14,844.49
Total Personnel Services – Salaries				\$14,844.49
200 <u>Personnel Services – Employee Benefits</u>				
210 Group Insurance – Contracted Provider				89.99
220 Social Security Contributions				1,083.99
230 PSERS Retirement Contributions				4,962.55
260 Workers' Compensation				100.93
270 Group Insurance – Self-Insurance				2,370.94
Total Personnel Services – Employee Benefits				\$8,608.40
Total 2530 Warehousing and Distributing Services				\$23,452.89

LEA : 113362303 Eastern Lancaster County SD

Printed 11/19/2019 11:26:13 AM

General Fund (10)

2540 Printing, Publishing and Duplicating Services	<u>Elementary</u>	<u>Secondary</u>	<u>Federal</u>	<u>Total</u>
100 <u>Personnel Services – Salaries</u>				
100 Personnel Services – Salaries				66.00
Total Personnel Services – Salaries				\$66.00
200 <u>Personnel Services – Employee Benefits</u>				
220 Social Security Contributions				4.74
230 PSERS Retirement Contributions				22.06
260 Workers’ Compensation				0.44
Total Personnel Services – Employee Benefits				\$27.24
Total 2540 Printing, Publishing and Duplicating Services				\$93.24

LEA : 113362303 Eastern Lancaster County SD

Printed 11/19/2019 11:26:13 AM

General Fund (10)				
2600 Operation and Maintenance of Plant Services	<u>Elementary</u>	<u>Secondary</u>	<u>Federal</u>	<u>Total</u>
100 <u>Personnel Services – Salaries</u>				
100 Personnel Services – Salaries				674,764.54
Total Personnel Services – Salaries				\$674,764.54
200 <u>Personnel Services – Employee Benefits</u>				
210 Group Insurance – Contracted Provider				2,761.65
220 Social Security Contributions				50,207.17
230 PSERS Retirement Contributions				223,074.74
260 Workers' Compensation				4,571.37
270 Group Insurance – Self-Insurance				134,288.32
291 Other Retirement Plans				4,395.00
Total Personnel Services – Employee Benefits				\$419,298.25
300 <u>Purchased Professional and Technical Services</u>				
330 Other Professional Services				102,654.00
350 Security / Safety Services				21,644.28
390 Other Purchased Professional and Technical Services				12,255.31
Total Purchased Professional and Technical Services				\$136,553.59
400 <u>Purchased Property Services</u>				
410 Cleaning Services				791,334.09
420 Utility Services				61,162.20
430 Repairs and Maintenance Services				508,370.90
440 Rentals				13,048.67
460 Extermination Services				5,191.60
Total Purchased Property Services				\$1,379,107.46
500 <u>Other Purchased Services</u>				
523 General Property and Liability Insurance				152,209.00
530 Communications				42.89
550 Printing and Binding				155.00
Total Other Purchased Services				\$152,406.89
600 <u>Supplies</u>				
610 General Supplies	153,576.64	205,071.91		358,648.55
620 Energy				820,040.47
630 Food				81.82
650 Supplies & Fees – Technology Related				22,599.99
Total Supplies	\$153,576.64	\$205,071.91		\$1,201,370.83
700 <u>Property</u>				
752 Capital Equipment – Original and Additional				70,362.43
762 Capitalized Equipment - Replacement				269,067.41
Total Property				\$339,429.84
800 <u>Other Objects</u>				
810 Dues and Fees				3,692.58
Total Other Objects				\$3,692.58
Total 2600 Operation and Maintenance of Plant Services	\$153,576.64	\$205,071.91		\$4,306,623.98

LEA : 113362303 Eastern Lancaster County SD

Printed 11/19/2019 11:26:13 AM

General Fund (10)

2610 Supervision of Operation and Maintenance of Plant Services	<u>Elementary</u>	<u>Secondary</u>	<u>Federal</u>	<u>Total</u>
100 <u>Personnel Services – Salaries</u>				
100 Personnel Services – Salaries				121,019.18
Total Personnel Services – Salaries				\$121,019.18
200 <u>Personnel Services – Employee Benefits</u>				
210 Group Insurance – Contracted Provider				623.45
220 Social Security Contributions				9,155.33
230 PSERS Retirement Contributions				40,122.33
260 Workers' Compensation				822.44
270 Group Insurance – Self-Insurance				10,453.86
291 Other Retirement Plans				4,395.00
Total Personnel Services – Employee Benefits				\$65,572.41
500 <u>Other Purchased Services</u>				
530 Communications				42.89
Total Other Purchased Services				\$42.89
600 <u>Supplies</u>				
610 General Supplies	910.45	840.42		1,750.87
630 Food				81.82
650 Supplies & Fees – Technology Related				990.00
Total Supplies	\$910.45	\$840.42		\$2,822.69
800 <u>Other Objects</u>				
810 Dues and Fees				250.00
Total Other Objects				\$250.00
Total 2610 Supervision of Operation and Maintenance of Plant Services	\$910.45	\$840.42		\$189,707.17

LEA : 113362303 Eastern Lancaster County SD

Printed 11/19/2019 11:26:13 AM

General Fund (10)				
2611 Supervision of Operation and Maintenance of Plant Services – Head of Component	<u>Elementary</u>	<u>Secondary</u>	<u>Federal</u>	<u>Total</u>
100 <u>Personnel Services – Salaries</u>				
100 Personnel Services – Salaries				121,019.18
Total Personnel Services – Salaries				\$121,019.18
200 <u>Personnel Services – Employee Benefits</u>				
210 Group Insurance – Contracted Provider				623.45
220 Social Security Contributions				9,155.33
230 PSERS Retirement Contributions				40,122.33
260 Workers' Compensation				822.44
270 Group Insurance – Self-Insurance				10,453.86
291 Other Retirement Plans				4,395.00
Total Personnel Services – Employee Benefits				\$65,572.41
500 <u>Other Purchased Services</u>				
530 Communications				42.89
Total Other Purchased Services				\$42.89
600 <u>Supplies</u>				
610 General Supplies	910.45	840.42		1,750.87
630 Food				81.82
650 Supplies & Fees – Technology Related				990.00
Total Supplies	\$910.45	\$840.42		\$2,822.69
800 <u>Other Objects</u>				
810 Dues and Fees				250.00
Total Other Objects				\$250.00
Total 2611 Supervision of Operation and Maintenance of Plant Services – Head of Component	\$910.45	\$840.42		\$189,707.17

LEA : 113362303 Eastern Lancaster County SD

Printed 11/19/2019 11:26:13 AM

General Fund (10)				
2620 Operation of Buildings Services	<u>Elementary</u>	<u>Secondary</u>	<u>Federal</u>	<u>Total</u>
100 <u>Personnel Services – Salaries</u>				
100 Personnel Services – Salaries				463,806.96
Total Personnel Services – Salaries				\$463,806.96
200 <u>Personnel Services – Employee Benefits</u>				
210 Group Insurance – Contracted Provider				1,064.73
220 Social Security Contributions				34,300.75
230 PSERS Retirement Contributions				154,011.85
260 Workers' Compensation				3,139.32
270 Group Insurance – Self-Insurance				110,963.62
Total Personnel Services – Employee Benefits				\$303,480.27
300 <u>Purchased Professional and Technical Services</u>				
390 Other Purchased Professional and Technical Services				12,255.31
Total Purchased Professional and Technical Services				\$12,255.31
400 <u>Purchased Property Services</u>				
410 Cleaning Services				566,201.44
420 Utility Services				60,738.13
430 Repairs and Maintenance Services				192,465.63
440 Rentals				2,436.00
460 Extermination Services				5,022.00
Total Purchased Property Services				\$826,863.20
500 <u>Other Purchased Services</u>				
523 General Property and Liability Insurance				152,209.00
550 Printing and Binding				155.00
Total Other Purchased Services				\$152,364.00
600 <u>Supplies</u>				
610 General Supplies	131,090.24	151,424.88		282,515.12
620 Energy				820,040.47
Total Supplies	\$131,090.24	\$151,424.88		\$1,102,555.59
700 <u>Property</u>				
752 Capital Equipment – Original and Additional				49,755.43
762 Capitalized Equipment - Replacement				52,501.00
Total Property				\$102,256.43
800 <u>Other Objects</u>				
810 Dues and Fees				1,254.00
Total Other Objects				\$1,254.00
Total 2620 Operation of Buildings Services	\$131,090.24	\$151,424.88		\$2,964,835.76

LEA : 113362303 Eastern Lancaster County SD

Printed 11/19/2019 11:26:13 AM

General Fund (10)

2630 Care and Upkeep of Grounds Services	<u>Elementary</u>	<u>Secondary</u>	<u>Federal</u>	<u>Total</u>
100 <u>Personnel Services – Salaries</u>				
100 Personnel Services – Salaries				89,938.40
Total Personnel Services – Salaries				\$89,938.40
200 <u>Personnel Services – Employee Benefits</u>				
210 Group Insurance – Contracted Provider				1,073.47
220 Social Security Contributions				6,751.09
230 PSERS Retirement Contributions				28,940.56
260 Workers' Compensation				609.61
270 Group Insurance – Self-Insurance				12,870.84
Total Personnel Services – Employee Benefits				\$50,245.57
300 <u>Purchased Professional and Technical Services</u>				
330 Other Professional Services				1,500.00
Total Purchased Professional and Technical Services				\$1,500.00
400 <u>Purchased Property Services</u>				
410 Cleaning Services				225,132.65
430 Repairs and Maintenance Services				4,720.16
460 Extermination Services				169.60
Total Purchased Property Services				\$230,022.41
600 <u>Supplies</u>				
610 General Supplies	7,701.97	33,032.92		40,734.89
Total Supplies	\$7,701.97	\$33,032.92		\$40,734.89
700 <u>Property</u>				
762 Capitalized Equipment - Replacement				33,803.00
Total Property				\$33,803.00
Total 2630 Care and Upkeep of Grounds Services	\$7,701.97	\$33,032.92		\$446,244.27

LEA : 113362303 Eastern Lancaster County SD

Printed 11/19/2019 11:26:13 AM

General Fund (10)				
2640 Care and Upkeep of Equipment Services	<u>Elementary</u>	<u>Secondary</u>	<u>Federal</u>	<u>Total</u>
400 <u>Purchased Property Services</u>				
430 Repairs and Maintenance Services				291,503.92
440 Rentals				10,612.67
Total Purchased Property Services				\$302,116.59
600 <u>Supplies</u>				
610 General Supplies	5,143.92	7,195.55		12,339.47
Total Supplies	\$5,143.92	\$7,195.55		\$12,339.47
700 <u>Property</u>				
752 Capital Equipment – Original and Additional				20,607.00
762 Capitalized Equipment - Replacement				59,119.41
Total Property				\$79,726.41
800 <u>Other Objects</u>				
810 Dues and Fees				2,109.58
Total Other Objects				\$2,109.58
Total 2640 Care and Upkeep of Equipment Services	\$5,143.92	\$7,195.55		\$396,292.05

LEA : 113362303 Eastern Lancaster County SD

Printed 11/19/2019 11:26:13 AM

General Fund (10)

2650 Vehicle Operation and Maintenance Services (Other Than Student Transportation Vehicles)	<u>Elementary</u>	<u>Secondary</u>	<u>Federal</u>	<u>Total</u>
400 <u>Purchased Property Services</u>				
420 Utility Services				424.07
430 Repairs and Maintenance Services				19,425.49
Total Purchased Property Services				\$19,849.56
600 <u>Supplies</u>				
610 General Supplies	727.26	671.32		1,398.58
Total Supplies	\$727.26	\$671.32		\$1,398.58
700 <u>Property</u>				
762 Capitalized Equipment - Replacement				123,644.00
Total Property				\$123,644.00
800 <u>Other Objects</u>				
810 Dues and Fees				79.00
Total Other Objects				\$79.00
Total 2650 Vehicle Operation and Maintenance Services (Other Than Student Transportation Vehicles)	\$727.26	\$671.32		\$144,971.14

LEA : 113362303 Eastern Lancaster County SD

Printed 11/19/2019 11:26:13 AM

General Fund (10)

2660 Safety and Security Services	<u>Elementary</u>	<u>Secondary</u>	<u>Federal</u>	<u>Total</u>
300 <u>Purchased Professional and Technical Services</u>				
330 Other Professional Services				92,068.00
350 Security / Safety Services				21,644.28
Total Purchased Professional and Technical Services				\$113,712.28
400 <u>Purchased Property Services</u>				
430 Repairs and Maintenance Services				255.70
Total Purchased Property Services				\$255.70
600 <u>Supplies</u>				
610 General Supplies	8,002.80	11,906.82		19,909.62
650 Supplies & Fees – Technology Related				21,609.99
Total Supplies	\$8,002.80	\$11,906.82		\$41,519.61
Total 2660 Safety and Security Services	\$8,002.80	\$11,906.82		\$155,487.59

General Fund (10)

2690 Other Operation and Maintenance of Plant Services	<u>Elementary</u>	<u>Secondary</u>	<u>Federal</u>	<u>Total</u>
300 <u>Purchased Professional and Technical Services</u>				
330 Other Professional Services				9,086.00
Total Purchased Professional and Technical Services				\$9,086.00
Total 2690 Other Operation and Maintenance of Plant Services				\$9,086.00

LEA : 113362303 Eastern Lancaster County SD

Printed 11/19/2019 11:26:13 AM

General Fund (10)				
2700 Student Transportation Services		<u>Elementary</u>	<u>Secondary</u>	<u>Federal</u> <u>Total</u>
100 <u>Personnel Services – Salaries</u>				
100 Personnel Services – Salaries				61,908.84
Total Personnel Services – Salaries				\$61,908.84
200 <u>Personnel Services – Employee Benefits</u>				
210 Group Insurance – Contracted Provider				261.43
220 Social Security Contributions				4,613.20
230 PSERS Retirement Contributions				20,696.08
260 Workers' Compensation				419.36
270 Group Insurance – Self-Insurance				9,483.78
Total Personnel Services – Employee Benefits				\$35,473.85
300 <u>Purchased Professional and Technical Services</u>				
330 Other Professional Services				115.00
390 Other Purchased Professional and Technical Services				295,628.47
Total Purchased Professional and Technical Services				\$295,743.47
400 <u>Purchased Property Services</u>				
430 Repairs and Maintenance Services				5,555.78
Total Purchased Property Services				\$5,555.78
500 <u>Other Purchased Services</u>				
513 Contracted Carriers			1,926.95	2,598,621.71
516 Student Transportation Services From the IU				25,446.77
530 Communications				1,593.92
550 Printing and Binding				192.00
Total Other Purchased Services			\$1,926.95	\$2,625,854.40
600 <u>Supplies</u>				
610 General Supplies				6,414.59
620 Energy				64,208.29
650 Supplies & Fees – Technology Related				8,522.19
Total Supplies				\$79,145.07
800 <u>Other Objects</u>				
810 Dues and Fees				839.00
Total Other Objects				\$839.00
Total 2700 Student Transportation Services			\$1,926.95	\$3,104,520.41

LEA : 113362303 Eastern Lancaster County SD

Printed 11/19/2019 11:26:13 AM

General Fund (10)				
2710 Supervision of Student Transportation Services	<u>Elementary</u>	<u>Secondary</u>	<u>Federal</u>	<u>Total</u>
100 <u>Personnel Services – Salaries</u>				
100 Personnel Services – Salaries				61,908.84
Total Personnel Services – Salaries				\$61,908.84
200 <u>Personnel Services – Employee Benefits</u>				
210 Group Insurance – Contracted Provider				261.43
220 Social Security Contributions				4,613.20
230 PSERS Retirement Contributions				20,696.08
260 Workers' Compensation				419.36
270 Group Insurance – Self-Insurance				9,483.78
Total Personnel Services – Employee Benefits				\$35,473.85
400 <u>Purchased Property Services</u>				
430 Repairs and Maintenance Services				1,272.56
Total Purchased Property Services				\$1,272.56
500 <u>Other Purchased Services</u>				
530 Communications				1,593.92
550 Printing and Binding				192.00
Total Other Purchased Services				\$1,785.92
600 <u>Supplies</u>				
610 General Supplies				2,429.30
Total Supplies				\$2,429.30
800 <u>Other Objects</u>				
810 Dues and Fees				14.00
Total Other Objects				\$14.00
Total 2710 Supervision of Student Transportation Services				\$102,884.47

LEA : 113362303 Eastern Lancaster County SD

Printed 11/19/2019 11:26:13 AM

General Fund (10)				
2711 Supervision of Student Transportation Services – Head of Component	<u>Elementary</u>	<u>Secondary</u>	<u>Federal</u>	<u>Total</u>
100 <u>Personnel Services – Salaries</u>				
100 Personnel Services – Salaries				61,908.84
Total Personnel Services – Salaries				\$61,908.84
200 <u>Personnel Services – Employee Benefits</u>				
210 Group Insurance – Contracted Provider				261.43
220 Social Security Contributions				4,613.20
230 PSERS Retirement Contributions				20,696.08
260 Workers' Compensation				419.36
270 Group Insurance – Self-Insurance				9,483.78
Total Personnel Services – Employee Benefits				\$35,473.85
400 <u>Purchased Property Services</u>				
430 Repairs and Maintenance Services				1,272.56
Total Purchased Property Services				\$1,272.56
500 <u>Other Purchased Services</u>				
530 Communications				1,593.92
550 Printing and Binding				192.00
Total Other Purchased Services				\$1,785.92
600 <u>Supplies</u>				
610 General Supplies				2,429.30
Total Supplies				\$2,429.30
800 <u>Other Objects</u>				
810 Dues and Fees				14.00
Total Other Objects				\$14.00
Total 2711 Supervision of Student Transportation Services – Head of Component				\$102,884.47

LEA : 113362303 Eastern Lancaster County SD

Printed 11/19/2019 11:26:13 AM

General Fund (10)

2720 Vehicle Operation Services	Elementary	Secondary	Federal	Total
300 <u>Purchased Professional and Technical Services</u>				
330 Other Professional Services				115.00
390 Other Purchased Professional and Technical Services				295,628.47
Total Purchased Professional and Technical Services				\$295,743.47
400 <u>Purchased Property Services</u>				
430 Repairs and Maintenance Services				4,283.22
Total Purchased Property Services				\$4,283.22
500 <u>Other Purchased Services</u>				
513 Contracted Carriers			1,926.95	2,029,587.47
516 Student Transportation Services From the IU				25,446.77
Total Other Purchased Services			\$1,926.95	\$2,055,034.24
600 <u>Supplies</u>				
610 General Supplies				3,985.29
620 Energy				64,208.29
650 Supplies & Fees – Technology Related				8,522.19
Total Supplies				\$76,715.77
800 <u>Other Objects</u>				
810 Dues and Fees				825.00
Total Other Objects				\$825.00
Total 2720 Vehicle Operation Services			\$1,926.95	\$2,432,601.70

LEA : 113362303 Eastern Lancaster County SD

Printed 11/19/2019 11:26:13 AM

General Fund (10)

2750 Nonpublic Transportation	<u>Elementary</u>	<u>Secondary</u>	<u>Federal</u>	<u>Total</u>
500 <u>Other Purchased Services</u>				
513 Contracted Carriers				569,034.24
Total Other Purchased Services				\$569,034.24
Total 2750 Nonpublic Transportation				\$569,034.24

LEA : 113362303 Eastern Lancaster County SD

Printed 11/19/2019 11:26:13 AM

General Fund (10)				
2800 Support Services – Central	<u>Elementary</u>	<u>Secondary</u>	<u>Federal</u>	<u>Total</u>
100 <u>Personnel Services – Salaries</u>				
100 Personnel Services – Salaries				911,329.29
Total Personnel Services – Salaries				\$911,329.29
200 <u>Personnel Services – Employee Benefits</u>				
210 Group Insurance – Contracted Provider				3,376.58
220 Social Security Contributions				67,066.91
230 PSERS Retirement Contributions				298,229.51
240 Tuition Reimbursement				58,041.23
260 Workers' Compensation				6,179.22
270 Group Insurance – Self-Insurance				176,499.81
291 Other Retirement Plans				2,387.50
Total Personnel Services – Employee Benefits				\$611,780.76
300 <u>Purchased Professional and Technical Services</u>				
330 Other Professional Services				42,677.11
340 Technical Services				68,734.00
360 Employee Training and Development Services				63,911.80
Total Purchased Professional and Technical Services				\$175,322.91
400 <u>Purchased Property Services</u>				
430 Repairs and Maintenance Services				170,578.53
440 Rentals				44.00
Total Purchased Property Services				\$170,622.53
500 <u>Other Purchased Services</u>				
530 Communications				130,043.45
549 Other Advertising/Public Relations				1,177.74
550 Printing and Binding				10,523.81
580 Travel				29,203.69
Total Other Purchased Services				\$170,948.69
600 <u>Supplies</u>				
610 General Supplies				337,289.84
630 Food				246.58
640 Books and Periodicals				143.43
650 Supplies & Fees – Technology Related				643,139.40
Total Supplies				\$980,819.25
700 <u>Property</u>				
756 Capitalized Technology Equipment – Original				22,127.80
Total Property				\$22,127.80
800 <u>Other Objects</u>				
810 Dues and Fees				6,102.46
Total Other Objects				\$6,102.46
Total 2800 Support Services – Central				\$3,049,053.69

LEA : 113362303 Eastern Lancaster County SD

Printed 11/19/2019 11:26:13 AM

General Fund (10)				
2810 Planning, Research, Development and Evaluation Services	<u>Elementary</u>	<u>Secondary</u>	<u>Federal</u>	<u>Total</u>
100 <u>Personnel Services – Salaries</u>				
100 Personnel Services – Salaries				686,069.60
Total Personnel Services – Salaries				\$686,069.60
200 <u>Personnel Services – Employee Benefits</u>				
210 Group Insurance – Contracted Provider				2,677.29
220 Social Security Contributions				50,612.17
230 PSERS Retirement Contributions				223,593.86
260 Workers' Compensation				4,650.52
270 Group Insurance – Self-Insurance				151,377.72
Total Personnel Services – Employee Benefits				\$432,911.56
300 <u>Purchased Professional and Technical Services</u>				
330 Other Professional Services				7,800.00
340 Technical Services				68,734.00
Total Purchased Professional and Technical Services				\$76,534.00
400 <u>Purchased Property Services</u>				
430 Repairs and Maintenance Services				170,578.53
440 Rentals				44.00
Total Purchased Property Services				\$170,622.53
500 <u>Other Purchased Services</u>				
530 Communications				127,563.74
549 Other Advertising/Public Relations				66.24
550 Printing and Binding				44.30
580 Travel				1,699.74
Total Other Purchased Services				\$129,374.02
600 <u>Supplies</u>				
610 General Supplies				333,697.56
650 Supplies & Fees – Technology Related				635,380.40
Total Supplies				\$969,077.96
700 <u>Property</u>				
756 Capitalized Technology Equipment – Original				22,127.80
Total Property				\$22,127.80
800 <u>Other Objects</u>				
810 Dues and Fees				3,478.51
Total Other Objects				\$3,478.51
Total 2810 Planning, Research, Development and Evaluation Services				\$2,490,195.98

Page 109

Page 110

LEA : 113362303 Eastern Lancaster County SD

Printed 11/19/2019 11:26:13 AM

General Fund (10)

2830 Staff Services

	<u>Elementary</u>	<u>Secondary</u>	<u>Federal</u>	<u>Total</u>
100 <u>Personnel Services – Salaries</u>				
100 Personnel Services – Salaries				225,259.69
Total Personnel Services – Salaries				\$225,259.69
200 <u>Personnel Services – Employee Benefits</u>				
210 Group Insurance – Contracted Provider				699.29
220 Social Security Contributions				16,454.74
230 PSERS Retirement Contributions				74,635.65
240 Tuition Reimbursement				58,041.23
260 Workers' Compensation				1,528.70
270 Group Insurance – Self-Insurance				25,122.09
291 Other Retirement Plans				2,387.50
Total Personnel Services – Employee Benefits				\$178,869.20
300 <u>Purchased Professional and Technical Services</u>				
330 Other Professional Services				34,877.11
360 Employee Training and Development Services				63,911.80
Total Purchased Professional and Technical Services				\$98,788.91
500 <u>Other Purchased Services</u>				
549 Other Advertising/Public Relations				1,111.50
580 Travel				27,503.95
Total Other Purchased Services				\$28,615.45
600 <u>Supplies</u>				
610 General Supplies				3,592.28
630 Food				246.58
640 Books and Periodicals				143.43
650 Supplies & Fees – Technology Related				7,759.00
Total Supplies				\$11,741.29
800 <u>Other Objects</u>				
810 Dues and Fees				2,623.95
Total Other Objects				\$2,623.95
Total 2830 Staff Services				\$545,898.49

LEA : 113362303 Eastern Lancaster County SD

Printed 11/19/2019 11:26:13 AM

General Fund (10)				
2831 Supervision of Staff Services	<u>Elementary</u>	<u>Secondary</u>	<u>Federal</u>	<u>Total</u>
100 <u>Personnel Services – Salaries</u>				
100 Personnel Services – Salaries				217,946.43
Total Personnel Services – Salaries				\$217,946.43
200 <u>Personnel Services – Employee Benefits</u>				
210 Group Insurance – Contracted Provider				699.29
220 Social Security Contributions				15,900.10
230 PSERS Retirement Contributions				72,190.81
260 Workers' Compensation				1,479.29
270 Group Insurance – Self-Insurance				25,122.09
291 Other Retirement Plans				2,387.50
Total Personnel Services – Employee Benefits				\$117,779.08
300 <u>Purchased Professional and Technical Services</u>				
330 Other Professional Services				4,558.50
Total Purchased Professional and Technical Services				\$4,558.50
600 <u>Supplies</u>				
650 Supplies & Fees – Technology Related				96.00
Total Supplies				\$96.00
800 <u>Other Objects</u>				
810 Dues and Fees				1,317.00
Total Other Objects				\$1,317.00
Total 2831 Supervision of Staff Services				\$341,697.01

General Fund (10)

2832 Recruitment and Placement Services	<u>Elementary</u>	<u>Secondary</u>	<u>Federal</u>	<u>Total</u>
300 <u>Purchased Professional and Technical Services</u>				
330 Other Professional Services				745.00
Total Purchased Professional and Technical Services				\$745.00
500 <u>Other Purchased Services</u>				
549 Other Advertising/Public Relations				1,111.50
Total Other Purchased Services				\$1,111.50
600 <u>Supplies</u>				
650 Supplies & Fees – Technology Related				2,700.00
Total Supplies				\$2,700.00
800 <u>Other Objects</u>				
810 Dues and Fees				755.00
Total Other Objects				\$755.00
Total 2832 Recruitment and Placement Services				\$5,311.50

LEA : 113362303 Eastern Lancaster County SD

Printed 11/19/2019 11:26:13 AM

General Fund (10)

2833 Staff Accounting Services

Elementary Secondary Federal Total

600 <u>Supplies</u>				
650 Supplies & Fees – Technology Related				4,963.00

Total Supplies				\$4,963.00
Total 2833 Staff Accounting Services				\$4,963.00

LEA : 113362303 Eastern Lancaster County SD

Printed 11/19/2019 11:26:13 AM

General Fund (10)

2834 Staff Development Services – Non-Instructional, Certified Staff Only	<u>Elementary</u>	<u>Secondary</u>	<u>Federal</u>	<u>Total</u>
100 <u>Personnel Services – Salaries</u>				
100 Personnel Services – Salaries				264.00
Total Personnel Services – Salaries				\$264.00
200 <u>Personnel Services – Employee Benefits</u>				
220 Social Security Contributions				20.12
230 PSERS Retirement Contributions				88.26
240 Tuition Reimbursement				58,041.23
260 Workers' Compensation				1.80
Total Personnel Services – Employee Benefits				\$58,151.41
300 <u>Purchased Professional and Technical Services</u>				
360 Employee Training and Development Services				28,321.43
Total Purchased Professional and Technical Services				\$28,321.43
500 <u>Other Purchased Services</u>				
580 Travel				13,532.56
Total Other Purchased Services				\$13,532.56
600 <u>Supplies</u>				
630 Food				246.58
640 Books and Periodicals				143.43
Total Supplies				\$390.01
800 <u>Other Objects</u>				
810 Dues and Fees				512.95
Total Other Objects				\$512.95
Total 2834 Staff Development Services – Non-Instructional, Certified Staff Only				\$101,172.36

LEA : 113362303 Eastern Lancaster County SD

Printed 11/19/2019 11:26:13 AM

General Fund (10)				
2835 Health Services	<u>Elementary</u>	<u>Secondary</u>	<u>Federal</u>	<u>Total</u>
100 <u>Personnel Services – Salaries</u>				
100 Personnel Services – Salaries				7,049.26
Total Personnel Services – Salaries				\$7,049.26
200 <u>Personnel Services – Employee Benefits</u>				
220 Social Security Contributions				534.52
230 PSERS Retirement Contributions				2,356.58
260 Workers’ Compensation				47.61
Total Personnel Services – Employee Benefits				\$2,938.71
300 <u>Purchased Professional and Technical Services</u>				
330 Other Professional Services				18,971.65
Total Purchased Professional and Technical Services				\$18,971.65
600 <u>Supplies</u>				
610 General Supplies				3,592.28
Total Supplies				\$3,592.28
Total 2835 Health Services				\$32,551.90

General Fund (10)

2836 Staff Development Services – Non-Instructional, Non-Certified Staff Only	<u>Elementary</u>	<u>Secondary</u>	<u>Federal</u>	<u>Total</u>
300 <u>Purchased Professional and Technical Services</u>				
360 Employee Training and Development Services				35,590.37
Total Purchased Professional and Technical Services				\$35,590.37
500 <u>Other Purchased Services</u>				
580 Travel				13,971.39
Total Other Purchased Services				\$13,971.39
800 <u>Other Objects</u>				
810 Dues and Fees				39.00
Total Other Objects				\$39.00
Total 2836 Staff Development Services – Non-Instructional, Non-Certified Staff Only				\$49,600.76

LEA : 113362303 Eastern Lancaster County SD

Printed 11/19/2019 11:26:13 AM

General Fund (10)

2839 Other Staff Services

<u>Elementary</u>	<u>Secondary</u>	<u>Federal</u>	<u>Total</u>
-------------------	------------------	----------------	--------------

300 Purchased Professional and Technical Services

330 Other Professional Services			10,601.96
---------------------------------	--	--	-----------

Total Purchased Professional and Technical Services			\$10,601.96
--	--	--	--------------------

Total 2839 Other Staff Services			\$10,601.96
--	--	--	--------------------

LEA : 113362303 Eastern Lancaster County SD

Printed 11/19/2019 11:26:13 AM

General Fund (10)

2900 Other Support Services	<u>Elementary</u>	<u>Secondary</u>	<u>Federal</u>	<u>Total</u>
100 <u>Personnel Services – Salaries</u>				
100 Personnel Services – Salaries				66,428.56
Total Personnel Services – Salaries				\$66,428.56
200 <u>Personnel Services – Employee Benefits</u>				
220 Social Security Contributions				4,993.28
260 Workers’ Compensation				451.91
Total Personnel Services – Employee Benefits				\$5,445.19
500 <u>Other Purchased Services</u>				
595 IU Payments By Withholding				36,178.59
Total Other Purchased Services				\$36,178.59
Total 2900 Other Support Services				\$108,052.34

LEA : 113362303 Eastern Lancaster County SD

Printed 11/19/2019 11:26:13 AM

General Fund (10)

2910 Support Services Not Listed Elsewhere In the 2000 Series

Elementary Secondary Federal Total

100 <u>Personnel Services – Salaries</u>				
100 Personnel Services – Salaries				66,428.56
Total Personnel Services – Salaries				\$66,428.56
200 <u>Personnel Services – Employee Benefits</u>				
220 Social Security Contributions				4,993.28
260 Workers’ Compensation				451.91
Total Personnel Services – Employee Benefits				\$5,445.19
500 <u>Other Purchased Services</u>				
595 IU Payments By Withholding				36,178.59
Total Other Purchased Services				\$36,178.59
Total 2910 Support Services Not Listed Elsewhere In the 2000 Series				\$108,052.34

LEA : 113362303 Eastern Lancaster County SD

Printed 11/19/2019 11:26:19 AM

General Fund (10)

3000 Operation of Non-Instructional Services	<u>Total</u>
100 <u>Personnel Services – Salaries</u>	
100 Personnel Services – Salaries	587,979.97
Total Personnel Services – Salaries	\$587,979.97
200 <u>Personnel Services – Employee Benefits</u>	
210 Group Insurance – Contracted Provider	347.17
220 Social Security Contributions	44,503.56
230 PSERS Retirement Contributions	144,976.92
260 Workers' Compensation	3,995.05
270 Group Insurance – Self-Insurance	18,967.56
Total Personnel Services – Employee Benefits	\$212,790.26
300 <u>Purchased Professional and Technical Services</u>	
322 Professional Educational Services – Ius	182.00
329 Professional Educational Services – Other	2,354.10
330 Other Professional Services	13,529.92
340 Technical Services	43,348.50
350 Security / Safety Services	3,754.68
390 Other Purchased Professional and Technical Services	9,443.96
Total Purchased Professional and Technical Services	\$72,613.16
400 <u>Purchased Property Services</u>	
430 Repairs and Maintenance Services	21,009.50
440 Rentals	3,750.00
Total Purchased Property Services	\$24,759.50
500 <u>Other Purchased Services</u>	
510 Student Transportation Services	57,790.74
520 Insurance – General	100.00
530 Communications	238.07
550 Printing and Binding	79.75
580 Travel	6,852.92
Total Other Purchased Services	\$65,061.48
600 <u>Supplies</u>	
610 General Supplies	89,621.03
620 Energy	107.82
630 Food	688.25
640 Books and Periodicals	17,425.07
650 Supplies & Fees – Technology Related	4,049.00
Total Supplies	\$111,891.17
800 <u>Other Objects</u>	
810 Dues and Fees	9,757.80
Total Other Objects	\$9,757.80
Total 3000 Operation of Non-Instructional Services	\$1,084,853.34

LEA : 113362303 Eastern Lancaster County SD

Printed 11/19/2019 11:26:19 AM

General Fund (10)

3200 Student Activities

	<u>Elementary</u>	<u>Secondary</u>	<u>Federal</u>	<u>Total</u>
100 <u>Personnel Services – Salaries</u>				
100 Personnel Services – Salaries				586,890.97
Total Personnel Services – Salaries				\$586,890.97
200 <u>Personnel Services – Employee Benefits</u>				
210 Group Insurance – Contracted Provider				347.17
220 Social Security Contributions				44,422.02
230 PSERS Retirement Contributions				144,634.99
260 Workers' Compensation				3,987.72
270 Group Insurance – Self-Insurance				18,967.56
Total Personnel Services – Employee Benefits				\$212,359.46
300 <u>Purchased Professional and Technical Services</u>				
329 Professional Educational Services – Other				2,354.10
330 Other Professional Services				13,529.92
340 Technical Services				43,348.50
350 Security / Safety Services				3,754.68
390 Other Purchased Professional and Technical Services				9,443.96
Total Purchased Professional and Technical Services				\$72,431.16
400 <u>Purchased Property Services</u>				
430 Repairs and Maintenance Services				21,009.50
440 Rentals				3,750.00
Total Purchased Property Services				\$24,759.50
500 <u>Other Purchased Services</u>				
510 Student Transportation Services				57,790.74
520 Insurance – General				100.00
530 Communications				238.07
550 Printing and Binding				79.75
580 Travel				6,852.92
Total Other Purchased Services				\$65,061.48
600 <u>Supplies</u>				
610 General Supplies				85,571.20
620 Energy				107.82
630 Food				688.25
640 Books and Periodicals				7,919.11
650 Supplies & Fees – Technology Related				4,049.00
Total Supplies				\$98,335.38
800 <u>Other Objects</u>				
810 Dues and Fees				9,757.80
Total Other Objects				\$9,757.80
Total 3200 Student Activities				\$1,069,595.75

LEA : 113362303 Eastern Lancaster County SD

Printed 11/19/2019 11:26:19 AM

General Fund (10)

3300 Community Services

	<u>Elementary</u>	<u>Secondary</u>	<u>Federal</u>	<u>Total</u>
100 <u>Personnel Services – Salaries</u>				
100 Personnel Services – Salaries			132.00	1,089.00
Total Personnel Services – Salaries			\$132.00	\$1,089.00
200 <u>Personnel Services – Employee Benefits</u>				
220 Social Security Contributions			10.04	81.54
230 PSERS Retirement Contributions			22.06	341.93
260 Workers’ Compensation			0.88	7.33
Total Personnel Services – Employee Benefits			\$32.98	\$430.80
300 <u>Purchased Professional and Technical Services</u>				
322 Professional Educational Services – Ius			182.00	182.00
Total Purchased Professional and Technical Services			\$182.00	\$182.00
600 <u>Supplies</u>				
610 General Supplies			4,049.83	4,049.83
640 Books and Periodicals			9,505.96	9,505.96
Total Supplies			\$13,555.79	\$13,555.79
Total 3300 Community Services			\$13,902.77	\$15,257.59

General Fund (10)

4000 Facilities Acquisition, Construction and Improvement Services		<u>Total</u>
300 <u>Purchased Professional and Technical Services</u>		
330 Other Professional Services	81,504.59	
Total Purchased Professional and Technical Services	\$81,504.59	
400 <u>Purchased Property Services</u>		
450 Construction Services	68,420.00	
Total Purchased Property Services	\$68,420.00	
Total 4000 Facilities Acquisition, Construction and Improvement Services	\$149,924.59	

LEA : 113362303 Eastern Lancaster County SD

Printed 11/19/2019 11:26:22 AM

General Fund (10)

4100 Site Acquisition Services – Original and Additional

Elementary

Secondary

Federal

Total

300 Purchased Professional and Technical Services

330 Other Professional Services

7,181.51

Total Purchased Professional and Technical Services

\$7,181.51

Total 4100 Site Acquisition Services – Original and Additional

\$7,181.51

LEA : 113362303 Eastern Lancaster County SD

Printed 11/19/2019 11:26:22 AM

General Fund (10)

4300 Architecture and Engineering Services / Educational Specifications Development – Original and Additional	<u>Elementary</u>	<u>Secondary</u>	<u>Federal</u>	<u>Total</u>
300 <u>Purchased Professional and Technical Services</u>				
330 Other Professional Services				16,900.00
Total Purchased Professional and Technical Services				\$16,900.00
Total 4300 Architecture and Engineering Services / Educational Specifications Development – Original and Additional				\$16,900.00

LEA : 113362303 Eastern Lancaster County SD

Printed 11/19/2019 11:26:22 AM

General Fund (10)

4400 Architecture and Engineering Services / Educational Specifications – Improvements	<u>Elementary</u>	<u>Secondary</u>	<u>Federal</u>	<u>Total</u>
300 <u>Purchased Professional and Technical Services</u>				
330 Other Professional Services				57,423.08
Total Purchased Professional and Technical Services				\$57,423.08
Total 4400 Architecture and Engineering Services / Educational Specifications – Improvements				\$57,423.08

General Fund (10)

4600 Existing Building Improvement Services	<u>Elementary</u>	<u>Secondary</u>	<u>Federal</u>	<u>Total</u>
400 <u>Purchased Property Services</u>				
450 Construction Services				68,420.00
Total Purchased Property Services				\$68,420.00
Total 4600 Existing Building Improvement Services				\$68,420.00

General Fund (10)

5000 Other Expenditures and Financing Uses		<u>Total</u>
800 <u>Other Objects</u>		
830 Interest		357,875.00
Total Other Objects		\$357,875.00
900 <u>Other Uses of Funds</u>		
910 Redemption of Principal		3,245,000.00
932 Capital Reserve Fund Transfers Applicable To Fund 32		2,500,000.00
939 Other Fund Transfers		15,197.27
Total Other Uses of Funds		\$5,760,197.27
Total 5000 Other Expenditures and Financing Uses		\$6,118,072.27

General Fund (10)

5100 Debt Service / Other Expenditures and Financing Uses	<u>Elementary</u>	<u>Secondary</u>	<u>Federal</u>	<u>Total</u>
800 <u>Other Objects</u>				
830 Interest				357,875.00
Total Other Objects				\$357,875.00
900 <u>Other Uses of Funds</u>				
910 Redemption of Principal				3,245,000.00
Total Other Uses of Funds				\$3,245,000.00
Total 5100 Debt Service / Other Expenditures and Financing Uses				\$3,602,875.00

General Fund (10)

5110 Debt Service	<u>Elementary</u>	<u>Secondary</u>	<u>Federal</u>	<u>Total</u>
800 <u>Other Objects</u>				
830 Interest				357,875.00
Total Other Objects				\$357,875.00
900 <u>Other Uses of Funds</u>				
910 Redemption of Principal				3,245,000.00
Total Other Uses of Funds				\$3,245,000.00
Total 5110 Debt Service				\$3,602,875.00

General Fund (10)

5200 Interfund Transfers – Out

Elementary

Secondary

Federal

Total

900 Other Uses of Funds

932 Capital Reserve Fund Transfers Applicable To Fund 32

2,500,000.00

939 Other Fund Transfers

15,197.27

Total Other Uses of Funds				\$2,515,197.27
Total 5200 Interfund Transfers – Out				\$2,515,197.27

General Fund (10)

5230 Capital Projects Fund Transfers	<u>Elementary</u>	<u>Secondary</u>	<u>Federal</u>	<u>Total</u>
900 <u>Other Uses of Funds</u>				
932 Capital Reserve Fund Transfers Applicable To Fund 32				2,500,000.00
Total Other Uses of Funds				\$2,500,000.00
Total 5230 Capital Projects Fund Transfers				\$2,500,000.00

General Fund (10)

5250 Enterprise Fund Transfers	<u>Elementary</u>	<u>Secondary</u>	<u>Federal</u>	<u>Total</u>
900 <u>Other Uses of Funds</u>				
939 Other Fund Transfers				15,197.27
Total Other Uses of Funds				\$15,197.27
Total 5250 Enterprise Fund Transfers				\$15,197.27

LEA : 113362303 Eastern Lancaster County SD

Printed 11/19/2019 11:26:37 AM

	<u>General Fund(10)</u>	<u>Public Purpose Trust(27)</u>	<u>Other Compt Approved</u> <u>(28)</u>	<u>Athletic / Activity(29)</u>	<u>Capital Reserve (690.</u> <u>1850)(31)</u>
1000 <u>Instruction</u>					
1100 Regular Programs - Elementary / Secondary	22,522,165.63				
1200 Special Programs - Elementary / Secondary	7,662,151.54				
1300 Vocational Education	1,279,775.02				
1400 Other Instructional Programs - Elementary / Secondary	205,409.48				
1500 Nonpublic School Programs	31,947.86				
Total Instruction	\$31,701,449.53				
2000 <u>Support Services</u>					
2100 Support Services - Students	2,045,358.73				
2200 Support Services - Instructional Staff	2,906,749.28				
2300 Support Services - Administration	2,904,469.02				
2400 Support Services - Pupil Health	1,082,048.98				
2500 Support Services - Business	623,627.32				
2600 Operation and Maintenance of Plant Services	4,306,623.98				
2700 Student Transportation Services	3,104,520.41				
2800 Support Services - Central	3,049,053.69				
2900 Other Support Services	108,052.34				
Total Support Services	\$20,130,503.75				
3000 <u>Operation of Non-Instructional Services</u>					
3200 Student Activities	1,069,595.75				
3300 Community Services	15,257.59				
Total Operation of Non-Instructional Services	\$1,084,853.34				
4000 <u>Facilities Acquisition, Construction and Improvement Services</u>					
4100 Site Acquisition Services - Original and Additional	7,181.51				
4300 Architecture and Engineering Services / Educational Specifications Development - Original and Additional	16,900.00				
4400 Architecture and Engineering Services / Educational Specifications - Improvements	57,423.08				
4600 Existing Building Improvement Services	68,420.00				
Total Facilities Acquisition, Construction and Improvement	\$149,924.59				
5000 <u>Other Expenditures and Financing Uses</u>					
5100 Debt Service / Other Expenditures and Financing Uses	3,602,875.00				
5200 Interfund Transfers - Out	2,515,197.27				
Total Other Expenditures and Financing Uses	\$6,118,072.27				
TOTAL ACTUAL EXPENDITURES & OTHER FINANCING USES	\$59,184,803.48				

LEA : 113362303 Eastern Lancaster County SD

Printed 11/19/2019 11:26:37 AM

	<u>Capital Reserve (1431)(32)</u>	<u>Other Capital Projects Fund(39)</u>	<u>Debt Service(40)</u>	<u>Permanent(90)</u>	<u>Total</u>
1000 Instruction					
1100 Regular Programs - Elementary / Secondary					22,522,165.63
1200 Special Programs - Elementary / Secondary					7,662,151.54
1300 Vocational Education					1,279,775.02
1400 Other Instructional Programs - Elementary / Secondary					205,409.48
1500 Nonpublic School Programs					31,947.86
Total Instruction					\$31,701,449.53
2000 Support Services					
2100 Support Services - Students					2,045,358.73
2200 Support Services - Instructional Staff					2,906,749.28
2300 Support Services - Administration					2,904,469.02
2400 Support Services - Pupil Health					1,082,048.98
2500 Support Services - Business					623,627.32
2600 Operation and Maintenance of Plant Services					4,306,623.98
2700 Student Transportation Services					3,104,520.41
2800 Support Services - Central					3,049,053.69
2900 Other Support Services					108,052.34
Total Support Services					\$20,130,503.75
3000 Operation of Non-Instructional Services					
3200 Student Activities					1,069,595.75
3300 Community Services					15,257.59
Total Operation of Non-Instructional Services					\$1,084,853.34
4000 Facilities Acquisition, Construction and Improvement Services					
4100 Site Acquisition Services - Original and Additional					7,181.51
4300 Architecture and Engineering Services / Educational Specifications Development - Original and Additional					16,900.00
4400 Architecture and Engineering Services / Educational Specifications - Improvements					57,423.08
4600 Existing Building Improvement Services					68,420.00
Total Facilities Acquisition, Construction and Improvement					\$149,924.59
5000 Other Expenditures and Financing Uses					
5100 Debt Service / Other Expenditures and Financing Uses					3,602,875.00
5200 Interfund Transfers - Out					2,515,197.27
Total Other Expenditures and Financing Uses					\$6,118,072.27
TOTAL ACTUAL EXPENDITURES & OTHER FINANCING USES					\$59,184,803.48

LEA : 113362303 Eastern Lancaster County SD

Printed 11/19/2019 11:26:45 AM

PSERS Salary Data (Salary Data should relate to the General Fund only)

Amount	Description	Amount
	Total Salary Base for salaries subject to PSERS withholding	21,626,728.00
	Total Federally Funded salaries subject to PSERS withholding	504,180.00

Title I Expenditure Data

Amount	Description	Amount
	Expenditures Funded with Current Title I Funds	821,096.49
	Expenditures Funded with Carry over Title I Funds	11,819.32
Total Title I Expenditure Data		\$832,915.81

Benefits for Staff Relative to Collective Bargaining Agreements

	OBJECT	COVERED	NOT COVERED	TOTAL
10 General Fund	No Self Insurance data to report			
	211 Medical Insurance			
	212 Dental Insurance			
	215 Eye Care Insurance			
	216 Prescription Insurance			
	271 Self-Insurance Medical Benefits			
	272 Self-Insurance Dental Benefits			
	275 Self-Insurance Eye Care Benefits			
	276 Self-Insurance Prescription Benefits			
	FUND TOTAL			
50 Enterprise Fund	No Self Insurance data to report			
	211 Medical Insurance			
	212 Dental Insurance			
	215 Eye Care Insurance			
	216 Prescription Insurance			
	271 Self-Insurance Medical Benefits			
	272 Self-Insurance Dental Benefits			
	275 Self-Insurance Eye Care Benefits			
	276 Self-Insurance Prescription Benefits			
	FUND TOTAL			
60 Internal Service Fund				
	211 Medical Insurance			
	212 Dental Insurance			
	215 Eye Care Insurance			
	216 Prescription Insurance			
	271 Self-Insurance Medical Benefits	2,097,346.27	557,522.42	2,654,868.69
	272 Self-Insurance Dental Benefits	188,634.83	50,143.44	238,778.27
	275 Self-Insurance Eye Care Benefits			
	276 Self-Insurance Prescription Benefits	178,673.87	47,495.59	226,169.46
	FUND TOTAL	\$2,464,654.97	\$655,161.45	\$3,119,816.42
Total of All Funds		\$2,464,654.97	\$655,161.45	\$3,119,816.42

LEA : 113362303 Eastern Lancaster County SD

Printed 11/19/2019 11:26:53 AM

Function	Special Education (Prior Year)	Nonspecial Education (Prior Year)	Total (Prior Year)	Special Education (Current Year)	Nonspecial Education (Current Year)	Total (Current Year)
2120 Guidance Services	332,554.01	822,390.37	1,154,944.38	404,131.04	845,030.10	1,249,161.14
2140 Psychological Services	345,402.84	159,448.71	504,851.55	354,605.50	162,829.13	517,434.63
2150 Speech Pathology and Audiology Services						
2160 Social Work Services	99,307.41	50,221.63	149,529.04	99,541.11	56,750.49	156,291.60
2260 Instruction and Curriculum Development Services	1,088,079.76	723,987.94	1,812,067.70	1,126,084.97	840,236.97	1,966,321.94
2350 Legal and Accounting Services	5,078.83	36,932.47	42,011.30	14,740.47	70,343.99	85,084.46
2420 Medical Services	493,069.10	5,274.25	498,343.35	344,864.03	4,021.50	348,885.53
2440 Nursing Services	100,808.82	594,424.41	695,233.23	164,804.11	551,144.27	715,948.38
2700 Student Transportation Services	761,228.66	2,478,904.68	3,240,133.34	880,185.59	2,224,334.82	3,104,520.41
Total	\$3,225,529.43	\$4,871,584.46	\$8,097,113.89	\$3,388,956.82	\$4,754,691.27	\$8,143,648.09

LEA : 113362303 Eastern Lancaster County SD

Printed 11/19/2019 11:26:55 AM

(PRINCIPAL AMOUNTS ONLY)

GOVERNMENTAL FUNDS/ ACTIVITIES

	Short-Term Borrowing	General Obligation Bonds/Notes	Authority Building Obligations	Other Long-Term Debt	Other Post- Employment Benefits (OPEB)	Compensated Absences	Net Pension Liability	Total
1. Debt at Beginning of Fiscal Year		11,980,000.00		1,379,691.00	6,598,884.00	559,569.00	74,400,140.00	94,918,284.00
2. Additional Debt Incurred During Year					715,236.00	19,283.00		734,519.00
3. Retirements and Repayments		3,245,000.00		41,298.00		3,634.00	401,713.00	3,691,645.00
4. Debt at End of Fiscal Year		8,735,000.00		1,338,393.00	7,314,120.00	575,218.00	73,998,427.00	91,961,158.00
5. Accreted Interest at End Of Fiscal Year								
6. Total Debt and Accreted Interest		8,735,000.00		1,338,393.00	7,314,120.00	575,218.00	73,998,427.00	91,961,158.00
7. Current Portion P&I - Due within 1 year		3,600,200.00		99,282.57				3,699,482.57
8. Interest Paid during current fiscal year		357,875.00		36,827.58				394,702.58

(PRINCIPAL AMOUNTS ONLY)

PROPRIETARY FUNDS

	Short-Term Borrowing	General Obligation Bonds/Notes	Authority Building Obligations	Other Long-Term Debt	Other Post- Employment Benefits (OPEB)	Compensated Absences	Net Pension Liability	Total
1. Debt at Beginning of Fiscal Year					23,574.00		571,459.00	595,033.00
2. Additional Debt Incurred During Year					456.00			456.00
3. Retirements and Repayments							18,175.00	18,175.00
4. Debt at End of Fiscal Year					24,030.00		553,284.00	577,314.00
5. Accreted Interest at End Of Fiscal Year								
6. Total Debt and Accreted Interest					24,030.00		553,284.00	577,314.00
7. Current Portion P&I - Due within 1 year								
8. Interest Paid during current fiscal year								

LEA : 113362303 Eastern Lancaster County SD

Printed 11/19/2019 11:26:55 AM

Total Principal and Interest Payments Made by Your School - All Funds

Function	Fund		Principal (910)	Principal (920)	Interest (830)	Total (Principal +Interest)	Misc Other Uses (990)
5110	10	General Fund	3,245,000.00		357,875.00	3,602,875.00	
5110	20	Special Revenue Funds					
5110	30	Capital Projects Funds					
5110	40	Debt Service Fund					
5110	90	Permanent Fund					
5120	10	General Fund					
5120	20	Special Revenue Funds					
5120	30	Capital Projects Funds					
5120	40	Debt Service Fund					
Total Debt Payments - Governmental Funds			\$3,245,000.00		\$357,875.00	\$3,602,875.00	

Function	Fund		Principal (910)	Principal (920)	Interest (830)	Total (Principal +Interest)
5110	50	Enterprise Fund				
5110	60	Internal Service Fund				
5120	50	Enterprise Fund				
5120	60	Internal Service Fund				
Total Debt Payments - Proprietary Funds						

LEA : 113362303 Eastern Lancaster County SD

Printed 11/19/2019 11:26:55 AM

Debt Details
Governmental Funds/ Activities

Debt Category	Debt Issue Date (MM/YYYY)	Principal Amounts Only				Current Portion Due Within One Year (Principal and Interest)	Interest Paid During Fiscal Year
		Debt at Beginning of Fiscal Year	Additions	Reductions / Repayments	Debt at End of Fiscal Year		
General Obligation Bonds/Notes – CIB	03/2017	9,180,000.00		445,000.00	8,735,000.00	3,600,200.00	301,875.00
General Obligation Bonds/Notes – CIB	10/2012	2,800,000.00		2,800,000.00			56,000.00
Other Long Term Debt/Liabilities		1,379,691.00		41,298.00	1,338,393.00	99,282.57	36,827.58
Compensated Absences		559,569.00	19,283.00	3,634.00	575,218.00		
Other Post-Employment Benefits (OPEB)		6,598,884.00	715,236.00		7,314,120.00		
Net Pension Liability		74,400,140.00		401,713.00	73,998,427.00		
Totals for Debt Entered:		\$94,918,284.00	\$734,519.00	\$3,691,645.00	\$91,961,158.00	\$3,699,482.57	\$394,702.58

Bond Details
Proprietary Funds

Debt Category	Debt Issue Date (MM/YYYY)	Principal Amounts Only				Current Portion Due Within One Year (Principal and Interest)	Interest Paid During Fiscal Year
		Debt at Beginning of Fiscal Year	Additions	Reductions / Repayments	Debt at End of Fiscal Year		
Other Post-Employment Benefits (OPEB)		23,574.00	456.00		24,030.00		
Net Pension Liability		571,459.00		18,175.00	553,284.00		
Totals for Debt Entered:		\$595,033.00	\$456.00	\$18,175.00	\$577,314.00		

LEA : 113362303 Eastern Lancaster County SD

Printed 11/19/2019 11:26:57 AM

General Fund (10)

Section 1: Tuition/Purchased Services as Reported within Expenditure Detail	Amount
Tuition Reported in General Fund Expenditures 1000-560	2,403,387.23
Purchased Services in General Fund Expenditures 1000-594 and 1000-597	658.86
Section 1 Total	\$2,404,046.09

Section 2: Tuition Paid to Institution Types During Fiscal Year	Tuition Paid For Nonspecial Education	Tuition Paid For Special Education	Total
1 1306 Institutions			
2 Institutionalized Children's Programs		658.86	658.86
3 Juveniles Incarcerated in Adult Facilities			
4 Residential Treatment Facilities			
5 Other Local Education Agencies	41,493.44	41,324.30	82,817.74
6 Brick and Mortar Charter Schools			
7 Cyber Charter Schools	578,262.01	312,488.66	890,750.67
8 Career and Technology Centers	959,313.58	199,277.70	1,158,591.28
9 Approved Private Schools			
10 PA Chartered Schools for the Deaf and Blind			
11 Private Residential Rehabilitative Institutions	484.60	2,980.50	3,465.10
12 Juvenile Detention Centers			
13 Special Program Jointures			
14 Other Tuition Not Included Elsewhere In This Section		267,762.44	267,762.44
Section 2 Total	\$1,579,553.63	\$824,492.46	\$2,404,046.09

Food Service / Cafeteria Operations Fund (51)

2000 Support Services		<u>Total</u>
300 <u>Purchased Professional and Technical Services</u>		
360 Employee Training and Development Services		1,690.23
Total Purchased Professional and Technical Services		\$1,690.23
500 <u>Other Purchased Services</u>		
580 Travel		114.46
Total Other Purchased Services		\$114.46
Total 2000 Support Services		\$1,804.69

Food Service / Cafeteria Operations Fund (51)

2800 Support Services – Central

<u>Elementary</u>	<u>Secondary</u>	<u>Federal</u>	<u>Total</u>
-------------------	------------------	----------------	--------------

300 Purchased Professional and Technical Services

360 Employee Training and Development Services			1,690.23
--	--	--	----------

Total Purchased Professional and Technical Services			\$1,690.23
--	--	--	-------------------

500 Other Purchased Services

580 Travel			114.46
------------	--	--	--------

Total Other Purchased Services			\$114.46
---------------------------------------	--	--	-----------------

Total 2800 Support Services – Central			\$1,804.69
--	--	--	-------------------

Food Service / Cafeteria Operations Fund (51)

2830 Staff Services	<u>Elementary</u>	<u>Secondary</u>	<u>Federal</u>	<u>Total</u>
300 <u>Purchased Professional and Technical Services</u>				
360 Employee Training and Development Services				1,690.23
Total Purchased Professional and Technical Services				\$1,690.23
500 <u>Other Purchased Services</u>				
580 Travel				114.46
Total Other Purchased Services				\$114.46
Total 2830 Staff Services				\$1,804.69

Food Service / Cafeteria Operations Fund (51)

2836 Staff Development Services – Non-Instructional, Non-Certified Staff Only	<u>Elementary</u>	<u>Secondary</u>	<u>Federal</u>	<u>Total</u>
300 <u>Purchased Professional and Technical Services</u>				
360 Employee Training and Development Services				1,690.23
Total Purchased Professional and Technical Services				\$1,690.23
500 <u>Other Purchased Services</u>				
580 Travel				114.46
Total Other Purchased Services				\$114.46
Total 2836 Staff Development Services – Non-Instructional, Non-Certified Staff Only				\$1,804.69

LEA : 113362303 Eastern Lancaster County SD

Printed 11/19/2019 11:27:10 AM

Food Service / Cafeteria Operations Fund (51)

3000 Operation of Non-Instructional Services		Total
100 <u>Personnel Services – Salaries</u>		
100 Personnel Services – Salaries		164,798.92
Total Personnel Services – Salaries		\$164,798.92
200 <u>Personnel Services – Employee Benefits</u>		
210 Group Insurance – Contracted Provider		252.35
220 Social Security Contributions		11,959.46
230 PSERS Retirement Contributions		48,120.77
260 Workers' Compensation		1,120.02
270 Group Insurance – Self-Insurance		48,423.76
Total Personnel Services – Employee Benefits		\$109,876.36
400 <u>Purchased Property Services</u>		
410 Cleaning Services		20.00
430 Repairs and Maintenance Services		35,747.13
Total Purchased Property Services		\$35,767.13
500 <u>Other Purchased Services</u>		
530 Communications		978.16
550 Printing and Binding		20.00
570 Food Service Management		410,142.12
580 Travel		1,451.97
Total Other Purchased Services		\$412,592.25
600 <u>Supplies</u>		
610 General Supplies		42,088.42
620 Energy		48.25
630 Food		580,211.67
640 Books and Periodicals		18.00
650 Supplies & Fees – Technology Related		10,405.00
Total Supplies		\$632,771.34
700 <u>Property</u>		
740 Depreciation		19,948.42
Total Property		\$19,948.42
800 <u>Other Objects</u>		
810 Dues and Fees		171.80
Total Other Objects		\$171.80
Total 3000 Operation of Non-Instructional Services		\$1,375,926.22

LEA : 113362303 Eastern Lancaster County SD

Printed 11/19/2019 11:27:10 AM

Food Service / Cafeteria Operations Fund (51)

3100 Food Services	Elementary	Secondary	Federal	Total
100 Personnel Services – Salaries				
100 Personnel Services – Salaries				164,798.92
Total Personnel Services – Salaries				\$164,798.92
200 Personnel Services – Employee Benefits				
210 Group Insurance – Contracted Provider				252.35
220 Social Security Contributions				11,959.46
230 PSERS Retirement Contributions				48,120.77
260 Workers' Compensation				1,120.02
270 Group Insurance – Self-Insurance				48,423.76
Total Personnel Services – Employee Benefits				\$109,876.36
400 Purchased Property Services				
410 Cleaning Services				20.00
430 Repairs and Maintenance Services				35,747.13
Total Purchased Property Services				\$35,767.13
500 Other Purchased Services				
530 Communications				978.16
550 Printing and Binding				20.00
570 Food Service Management			193,310.74	410,142.12
580 Travel				1,451.97
Total Other Purchased Services			\$193,310.74	\$412,592.25
600 Supplies				
610 General Supplies			42,088.42	42,088.42
620 Energy				48.25
630 Food			580,211.67	580,211.67
640 Books and Periodicals				18.00
650 Supplies & Fees – Technology Related				10,405.00
Total Supplies			\$622,300.09	\$632,771.34
700 Property				
740 Depreciation				19,948.42
Total Property				\$19,948.42
800 Other Objects				
810 Dues and Fees				171.80
Total Other Objects				\$171.80
Total 3100 Food Services			\$815,610.83	\$1,375,926.22

Internal Service Fund (60)

2000 Support Services

Total

200 Personnel Services – Employee Benefits

250	Unemployment Compensation	21,068.75
270	Group Insurance – Self-Insurance	3,119,816.42
292	Health Savings Accounts	500,830.19
299	All Other Employee Benefits	61,179.58
Total Personnel Services – Employee Benefits		\$3,702,894.94

800 Other Objects

810	Dues and Fees	560.88
Total Other Objects		\$560.88
Total 2000 Support Services		\$3,703,455.82

Internal Service Fund (60)

2900 Other Support Services	<u>Elementary</u>	<u>Secondary</u>	<u>Federal</u>	<u>Total</u>
200 <u>Personnel Services – Employee Benefits</u>				
250 Unemployment Compensation				21,068.75
270 Group Insurance – Self-Insurance				3,119,816.42
292 Health Savings Accounts				500,830.19
299 All Other Employee Benefits				61,179.58
Total Personnel Services – Employee Benefits				\$3,702,894.94
800 <u>Other Objects</u>				
810 Dues and Fees				560.88
Total Other Objects				\$560.88
Total 2900 Other Support Services				\$3,703,455.82

Internal Service Fund (60)

2910 Support Services Not Listed Elsewhere In the 2000 Series

<u>Elementary</u>	<u>Secondary</u>	<u>Federal</u>	<u>Total</u>
-------------------	------------------	----------------	--------------

200 Personnel Services – Employee Benefits

250	Unemployment Compensation		21,068.75
270	Group Insurance – Self-Insurance		3,119,816.42
292	Health Savings Accounts		500,830.19
299	All Other Employee Benefits		61,179.58

Total Personnel Services – Employee Benefits			\$3,702,894.94
---	--	--	-----------------------

800 Other Objects

810	Dues and Fees		560.88
-----	---------------	--	--------

Total Other Objects			\$560.88
----------------------------	--	--	-----------------

Total 2910 Support Services Not Listed Elsewhere In the 2000 Series			\$3,703,455.82
--	--	--	-----------------------

	<u>Food Service(51)</u>	<u>Child Care Operations(52)</u>	<u>Other Enterprise(58)</u>	<u>Internal Service(60)</u>	<u>Total</u>
2000 Support Services					
2800 Support Services - Central	1,804.69				1,804.69
2900 Other Support Services				3,703,455.82	3,703,455.82
Total Support Services	\$1,804.69			\$3,703,455.82	\$3,705,260.51
3000 Operation of Non-Instructional Services					
3100 Food Services	1,375,926.22				1,375,926.22
Total Operation of Non-Instructional Services	\$1,375,926.22				\$1,375,926.22
TOTAL ACTUAL EXPENDITURES & OTHER FINANCING USES	\$1,377,730.91			\$3,703,455.82	\$5,081,186.73

LEA : 113362303 Eastern Lancaster County SD

Printed 11/19/2019 11:27:23 AM

Fund	School	School Number	Local Personnel	Local Nonpersonnel	State Personnel	State Nonpersonnel	Federal Personnel	Federal Nonpersonnel	Total	Explanation
10										
	Blue Ball El Sch	2552	4,252,229.55	1,621,405.88	1,408,231.44	536,968.83	460,525.75	27,163.15	8,306,524.60	
	Brecknock El Sch	2500	4,010,773.48	1,390,234.57	1,328,267.26	460,410.71	281,213.12	24,310.85	7,495,209.99	
	Garden Spot MS	7209	5,176,426.49	1,198,890.85	1,714,302.20	397,042.48	69,041.42	23,720.30	8,579,423.74	
	Garden Spot SHS	2554	7,533,390.46	3,976,200.22	2,494,869.37	1,316,817.46	316,264.53	49,950.44	15,687,492.48	
	New Holland Elementary	4707	4,381,378.86	1,691,300.84	1,451,002.44	560,116.28	458,500.76	27,657.29	8,569,956.47	
Total			25,354,198.84	9,878,032.36	8,396,672.71	3,271,355.76	1,585,545.58	152,802.03	48,638,607.28	